



IMAGE  
DESIGN  
STAIRS

*The Stair Specialist*



STAIR & RAILING PRODUCTS BY

HOUSE OF  
FORGINGS

# Table of Contents

POWDER COATED & STAINLESS STEEL	2-49
Stainless Steel Cable Railing	2-5
Finishes & Patinas	6-7
Aalto	8-11
Tuscan	12-17
Orleans	18-19
Monte Carlo	20-21
Endecor	22-23
Designer	24-25
Stainless	26-27
Santa Fe	28-29
Gothic	30-31
Round	32-35
Versatile	36-39
Ribbon	40-43
Twist	44-47
Accessories	48-49
FORGED PANELS	50-71
Rebecca	51-53
Tuscany	54-57
Seville	58-59
Milano	60-62
Bordeaux	64-67
Regency	68-71
WOOD	72-83
Newels & Balusters	74-75
Elegante & Box Newels	76-77
Handrail & Fittings	78-79
Treads	80
Starter Steps	81
Lumber & Plywood	81
Moulding	82
Accessories	83
COMPANY & PRODUCT INFORMATION	84



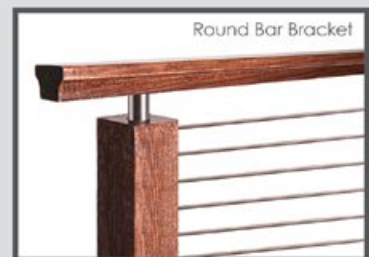
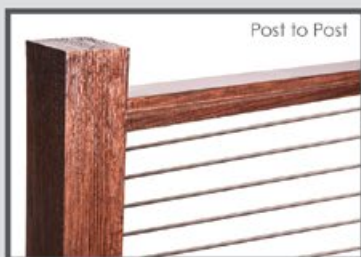
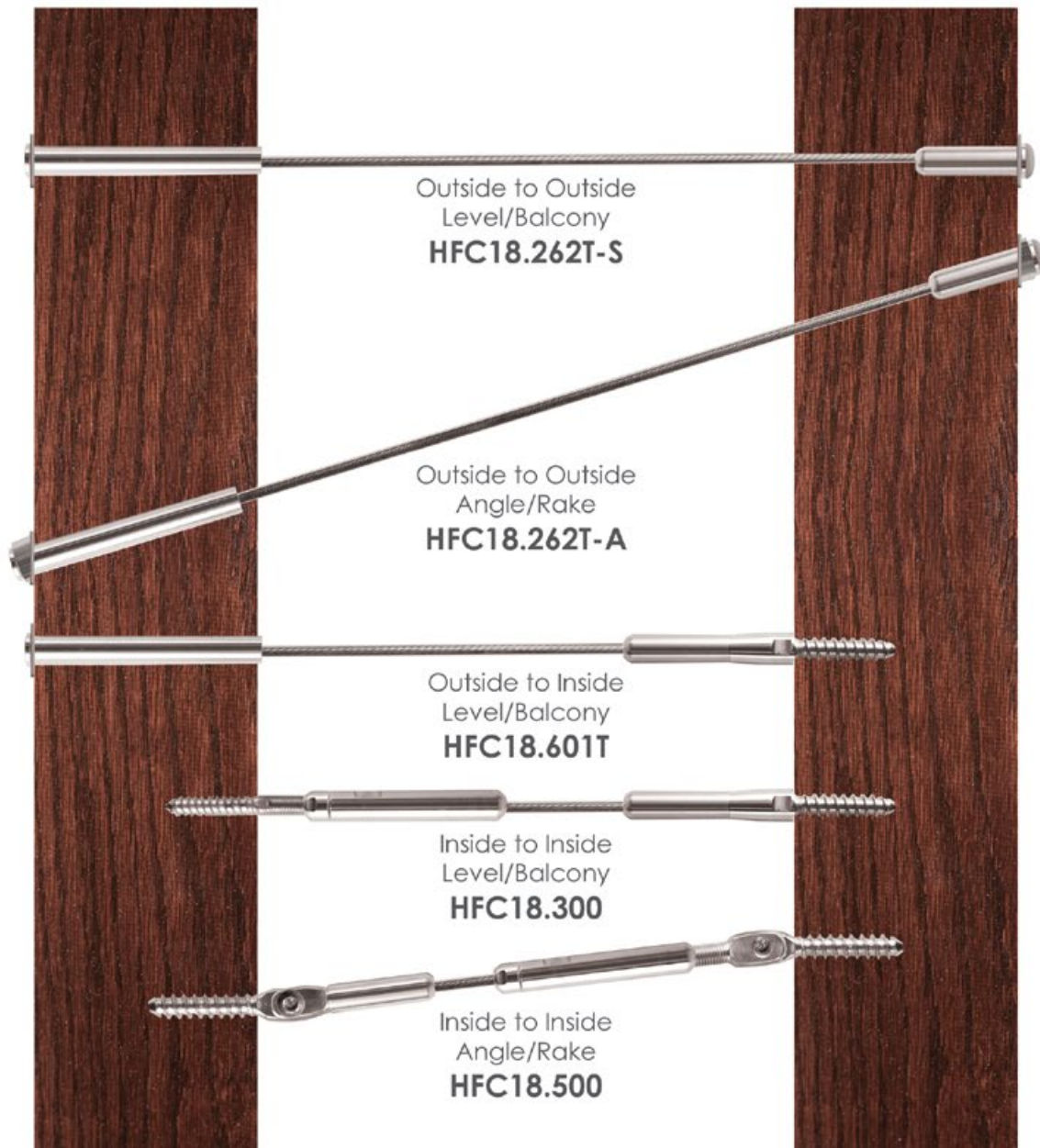
Red Oak 4000 Newels, 6084 Handrail with stainless round bar bracket (shown)

Create the ideal modern aesthetic by combining stainless steel cable and rich oak. The expansive views allowed for by cable make it ideal for balconies as well as staircases.



— Stainless Steel —

# Cable Railing





Outside to Outside  
Level/Balcony  
**HFC18.262T-S**



Outside to Outside  
Angle/Rake  
**HFC18.262T-A**



Outside to Inside  
Level/Balcony  
**HFC18.601T**



Pre Swaged 1/8" cable (5',10',15',18')

**HFC18-5T** (5ft) Swaged Threaded Stud  
**HFC18-10T** (10ft) Swaged Threaded Stud  
**HFC18-15T** (15ft) Swaged Threaded Stud  
**HFC18-18T** (18ft) Swaged Threaded Stud

Inside to Inside  
Level/Balcony  
**HFC18.300**



Inside to Inside  
Angle/Rake  
**HFC18.500**



Pre Swaged 1/8" cable (5',10',15',18')

**HFC18-5** (5ft) Swaged Ferrule  
**HFC18-10** (10ft) Swaged Ferrule  
**HFC18-15** (15ft) Swaged Ferrule  
**HFC18-18** (18ft) Swaged Ferrule

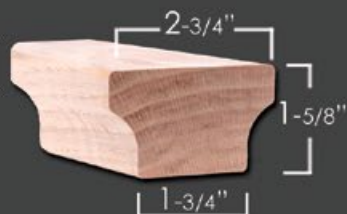
\* All components are made from 316 Stainless Steel for marine grade corrosion resistance.

## Modern Handrail



**6084**

Modern Hand Rail  
HT. 1-3/4"  
W. 2-5/8"



### NEW PRODUCT EXCLUSIVE

**6084** Straight Rail  
Available in 8' & 16'  
No fittings available



**6002**

Modern Hand Rail  
HT. 1-5/8"  
W. 2-3/4"



**6002** Straight Rail  
Available in 8' & 16'  
No fittings available

## Wall Mount Handrail Bracket



mounting hardware included

### NEW PRODUCT EXCLUSIVE



**HF17.4002**  
HT. 2-1/2"  
Base = 1-1/2" x 2"  
Extends 3-1/4" off wall  
**ADJUSTABLE**

## Newel



**4000**  
HT. 54"  
W = 3-1/4"

## Intermediate Newel



**4923-41**  
HT. 41"  
W = 1-3/4"



## Stainless Newel [cut to length for brackets]

### NEW PRODUCT EXCLUSIVE



**HF17.1.2-T**  
Ends: 1-3/16" Rd.  
HT. 47"  
Wt. 5.7 lbs.  
**TUBULAR**

## Newel Mount Handrail Bracket



mounting hardware included

### NEW PRODUCT EXCLUSIVE



**HF17.4001**  
HT. 1-3/4"  
Base = 1-1/2" sq.  
**ADJUSTABLE**

## Newel Cap



**SQUARE CAP-4000**  
3-1/4" Square  
3/4" x 1" dowel

### NEW PRODUCT EXCLUSIVE



## Insert Tube



**HFC18.TUBE**

## Release Key



**HFC18.KEY**

\* All wood parts stocked in Red Oak





RAW IRON (RAW)

*This is raw (unfinished) iron that needs to be painted or powder coated.*



SATIN BLACK (STB)



ASH GREY (AG)



SILVER VEIN (SP)



COPPER VEIN (CV)



OIL RUBBED BRONZE (ORB)





OIL RUBBED COPPER (ORC)



ANTIQUE NICKEL (AN)



VINTAGE BRASS (VB)



SATIN CLEAR (SC)

*This is a clear finish over RAW/unfinished iron, variations in surface color may occur.*



STAINLESS STEEL

## Finishes & Patinas

House of Forgings provides an unsurpassed selection of designs in the highest quality powdercoated finishes available. Our hand applied patinas enhance the lines and hammered detail of each unique piece. As interior design trends move forward, count on us to carry the latest styles & finishes.

THESE FINISHES HAVE BEEN PROFESSIONALLY PHOTOGRAPHED WITH THE HIGHEST INTEGRITY. OUR GOAL IS TO PRODUCE THE MOST REALISTIC MATCH TO THE ACTUAL FINISHES. HOWEVER SOME SLIGHT VARIANCES MAY OCCUR.

All images are the sole property of House of Forgings, LLC. and cannot be copied or reproduced without written permission.

# AALTO



Ash Grey (shown)

Ash Grey (shown)

Our Aalto collection is a compliment to the modern design aesthetic. Adorn any space with the clean lines and open detail of these modern balusters and panels.





Satin Black (shown)



Satin Black (shown)



Satin Black (shown)



Ash Grey (shown)



Ash Grey (shown)



# AALTO

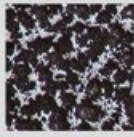
## SQUARE



## Finishes & Patinas



SATIN BLACK  
(STB)



SILVER VEIN  
(SP)



COPPER VEIN  
(CV)



ASH GREY  
(AG)

	NEWELS	HF16.5.8	HF16.5.8-T	BALUSTERS	HF16.2.1	HF16.2.1-T	HF16.2.1-50	HF16.1.30	HF16.1.30-T	HF16.1.31	HF16.1.31-T	HF16.1.32	HF16.1.32-T	HF16.6.1	HF16.6.2	HF16.6.3	HF16.6.4	HF16.6.5	HF9.4.1	HF9.4.2	HF9.4.3	HF9.4.11	HF9.4.22	HF9.4.33
STB		•			•	•	•	•		•		•		•	•	•	•	•	•	•	•	•	•	•
SP		•			•	•		•		•		•												
CV		•			•	•		•		•		•												
AG			•			•			•		•		•	•	•	•	•	•	•	•	•	•	•	•

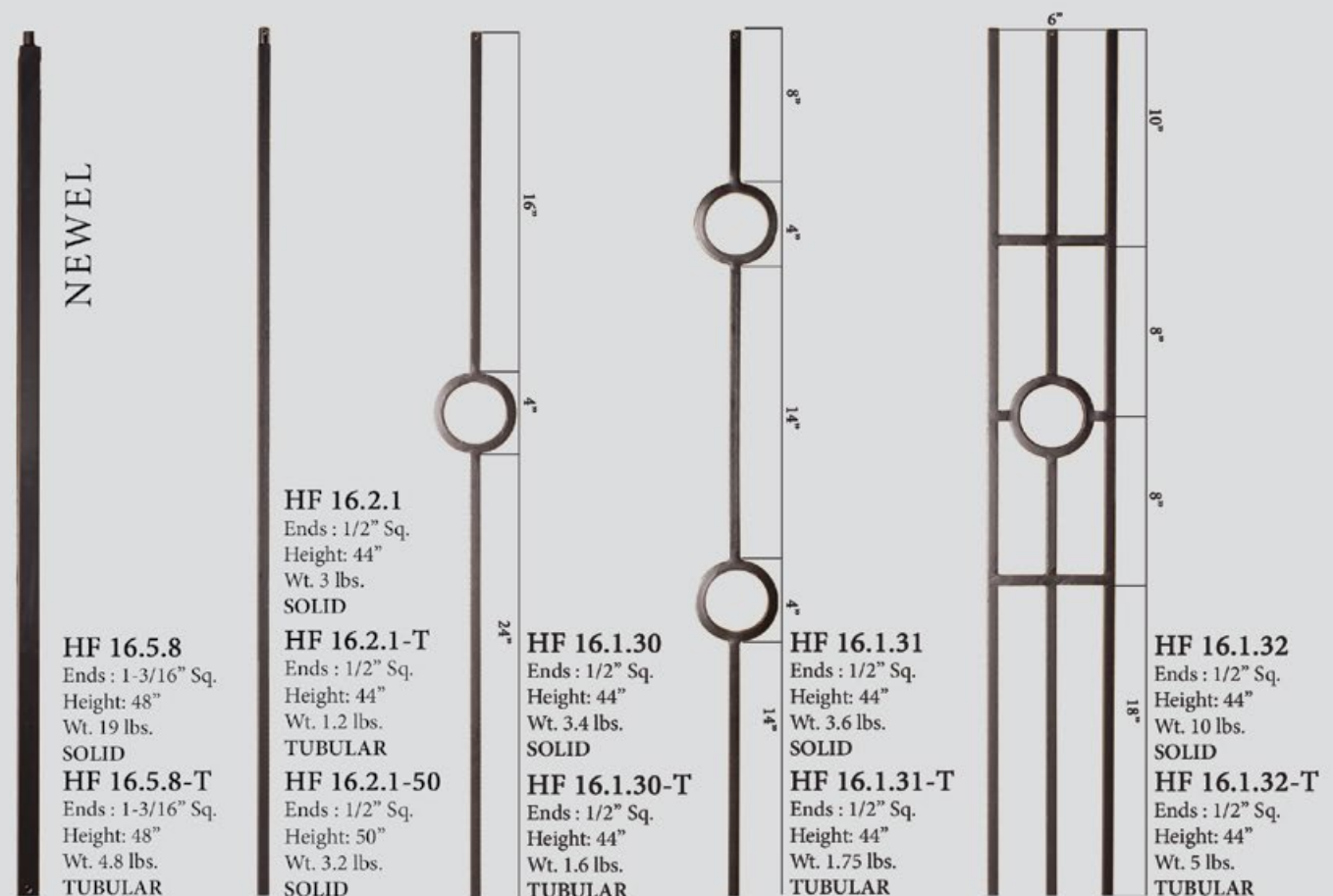
## ACCESSORIES

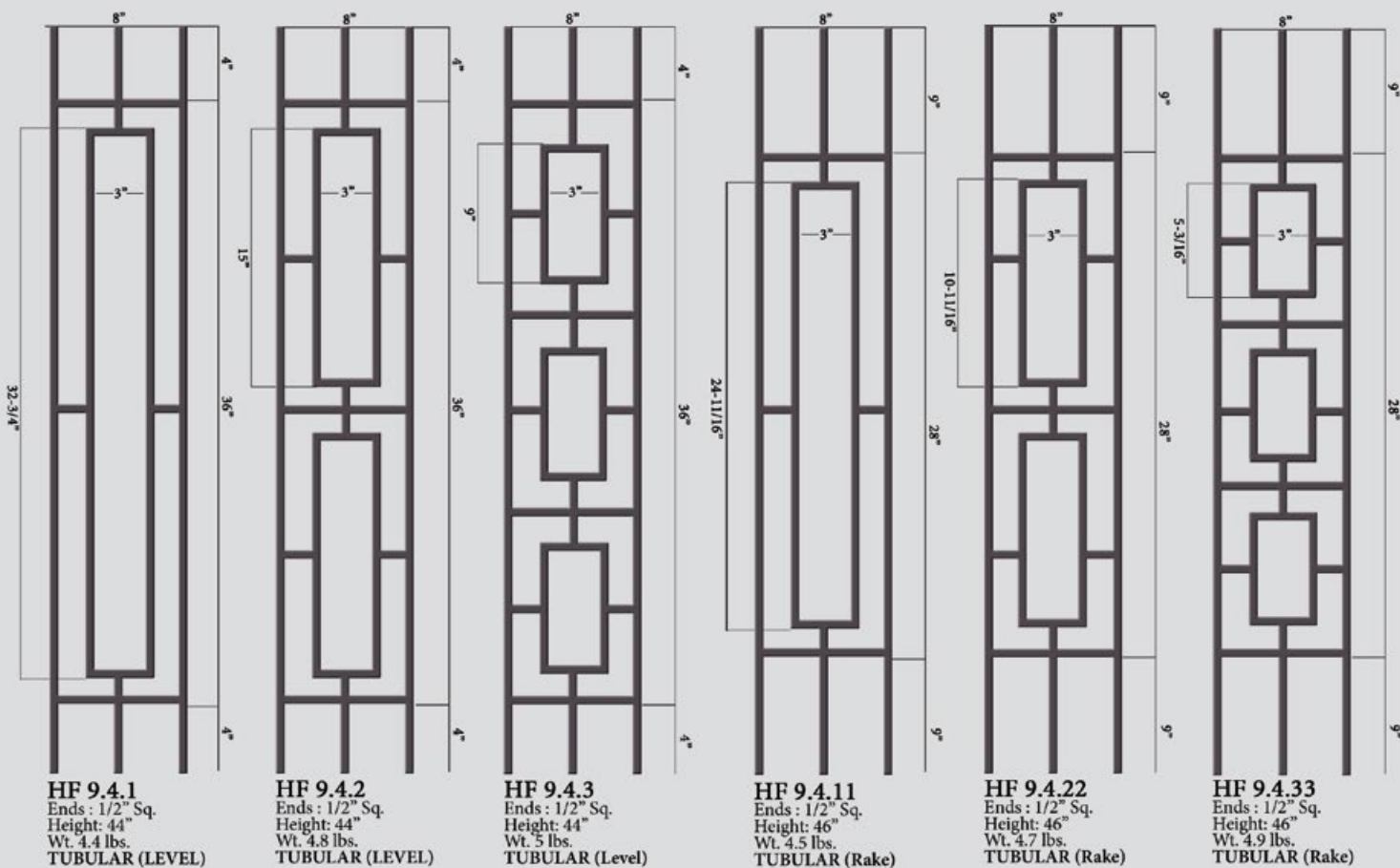
Level base shoes  
Level base collars  
Angled base shoes  
Newel mounting kit

HF16.3.1, HF16.3.19  
HF16.3.4, HF16.3.5,  
HF16.3.2, HF16.3.30  
HF16.2.3

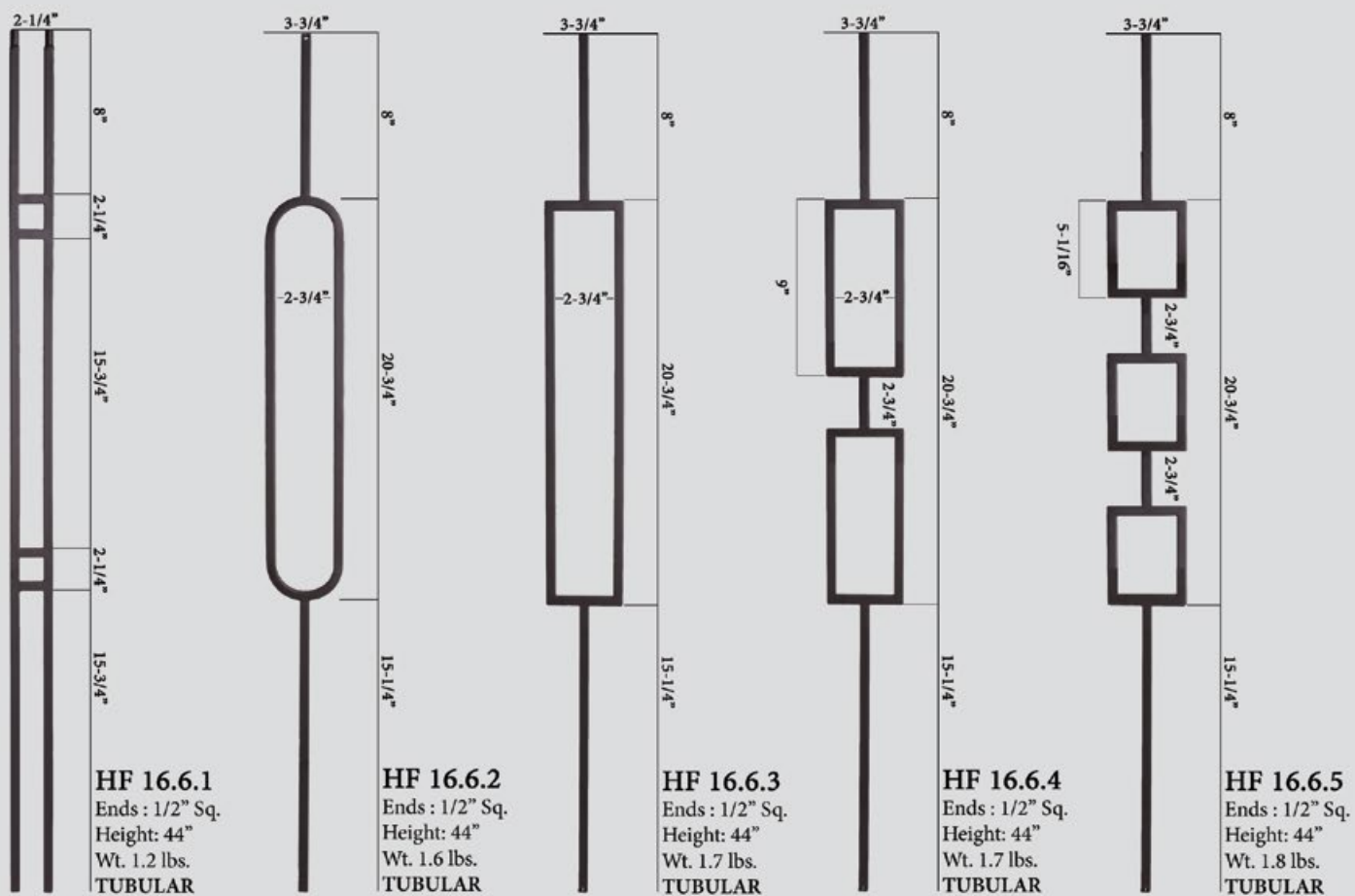
Photos: A. A.  
Photos: D. H.  
Photos: E. G.  
Photos: T.

For photos and full accessory details see pages 48-49





\*Rake panels fit all angles up to 40 degrees







Oil Rubbed Bronze (shown)

The craftsmanship in these hand-forged balusters exude character and beauty nearly impossible to duplicate. Our Tuscan series is available in both round forged and square hammered profiles. Bring the rustic charm of old world Italy into your home with this unique series.

Oil Rubbed Bronze (shown)



# TUSCAN



Vintage Brass (shown)



Oil Rubbed Bronze (shown)



# TUSCAN

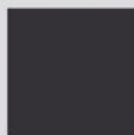
ROUND HAND FORGED



## Finishes & Patinas



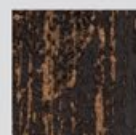
RAW IRON  
(RAW)



SATIN BLACK  
(STB)



COPPER VEIN  
(CV)



OIL RUBBED  
BRONZE  
(ORB)



SATIN CLEAR  
(SC)



VINTAGE  
BRASS  
(VB)

	NEWELS	HF1.1.22	HF1.1.8	HF1.1.9	HF1.1.16	HF1.1.20	HF1.1.21	BALUSTERS	HF2.9.21	HF2.1.5	HF2.1.6	HF2.1.7	HF2.1.9	HF2.1.8	HF2.1.11	HF2.6.8	HF2.6.9	HF2.6.7	HF2.10.2	HF2.10.4	HF2.10.3	HF2.11.40	HF2.11.41
RAW		•		•	•				•				•	•	•	•	•	•	•	•	•		
STB		•	•	•	•	•	•		•	•	•	•	•	•	•	•	•	•	•	•	•	•	•
CV					•				•										•	•	•		
ORB		•	•	•	•	•	•		•	•	•	•	•	•	•	•	•	•	•	•	•	•	•
SC		•			•		•		•							•	•	•	•	•			
VB					•	•			•										•	•	•	•	•

### ACCESSORIES

Level base shoes  
Level base collars  
Angled base shoes  
Adjustable level base shoes  
Adjustable angled base shoes  
Newel mounting kit

HF16.3.26  
HF16.3.40, HF16.3.43  
HF16.3.27  
HF16.3.44, HF16.3.46  
HF16.3.45, HF16.3.47  
HF16.3.33

Photos: J.  
Photos: K. O.  
Photos: N.  
Photos: R.  
Photos: S.  
Photos: U.

For photos and full accessory details see pages 48-49





**HF 2.1.9**  
Ends : 9/16" Rd.  
Height: 44"  
Wt. 2.4 lbs.



**HF 2.1.8**  
Ends : 9/16" Rd.  
Height: 44"  
Wt. 4.2 lbs.



**HF 2.1.11**  
Ends : 9/16" Rd.  
Height: 44"  
Wt. 3 lbs.



**HF 2.6.8**  
Ends : 9/16" Rd.  
Tapered  
Height: 44"  
Wt. 3.2 lbs.



**HF 2.6.9**  
Ends : 9/16" Rd.  
Height: 44"  
Wt. 4.2 lbs.



**HF 2.6.7**  
Ends : 9/16" Rd.  
Tapered  
Height: 44"  
Wt. 3.8 lbs.



**HF 2.9.21**  
Ends : 9/16" Rd.  
Height: 44"  
Wt. 2.4 lbs.



**HF 2.10.2**  
Ends : 9/16" Rd.  
Height: 44"  
Wt. 3.2 lbs.



**HF 2.10.4**  
Ends : 9/16" Rd.  
Height: 44"  
Wt. 4.2 lbs.



**HF 2.10.3**  
Ends : 9/16" Rd.  
Height: 44"  
Wt. 3.6 lbs.



**HF 2.11.40**  
Ends : 9/16" Rd.  
Height: 44"  
Wt. 4 lbs.



**HF 2.11.41**  
Ends : 9/16" Rd.  
Height: 44"  
Wt. 5.2 lbs.





## Finishes & Patinas



RAW IRON  
(RAW)



SATIN BLACK  
(STB)



COPPER VEIN  
(CV)



OIL RUBBED  
BRONZE  
(ORB)



SATIN CLEAR  
(SC)



VINTAGE  
BRASS  
(VB)

	NEWELS	HF1.1.10	HF1.1.11	HF1.1.14	HF1.1.14-T	HF1.1.15	HF1.1.15-T	BALUSTERS	HF2.9.12	HF2.9.11	HF2.9.13	HF2.9.3	HF2.9.4	HF2.9.8	HF2.9.5	HF2.9.6	HF2.1.2	HF2.1.1	HF2.9.20	HF2.9.20-T	HF2.9.28	HF2.9.28-T	HF2.9.27	HF2.9.26	HF2.9.26-T	HF2.9.29	HF2.9.36	HF2.9.37
RAW		•	•	•		•			•	•	•	•	•	•	•	•			•		•		•	•				
STB		•	•	•	•	•	•		•	•	•	•	•	•	•	•	•	•	•	•	•	•	•	•	•	•	•	•
CV			•	•		•			•	•	•			•					•		•		•	•				
ORB		•	•	•	•	•	•		•	•	•	•	•	•	•	•	•	•	•	•	•	•	•	•	•	•	•	•
SC			•	•		•			•	•	•			•					•		•		•	•				
VB			•	•		•			•	•	•			•					•		•		•	•				

## ACCESSORIES

Level base shoes  
Level base collars  
Angled base shoes  
Adjustable level base shoes  
Adjustable angled base shoes  
Newel mounting kit

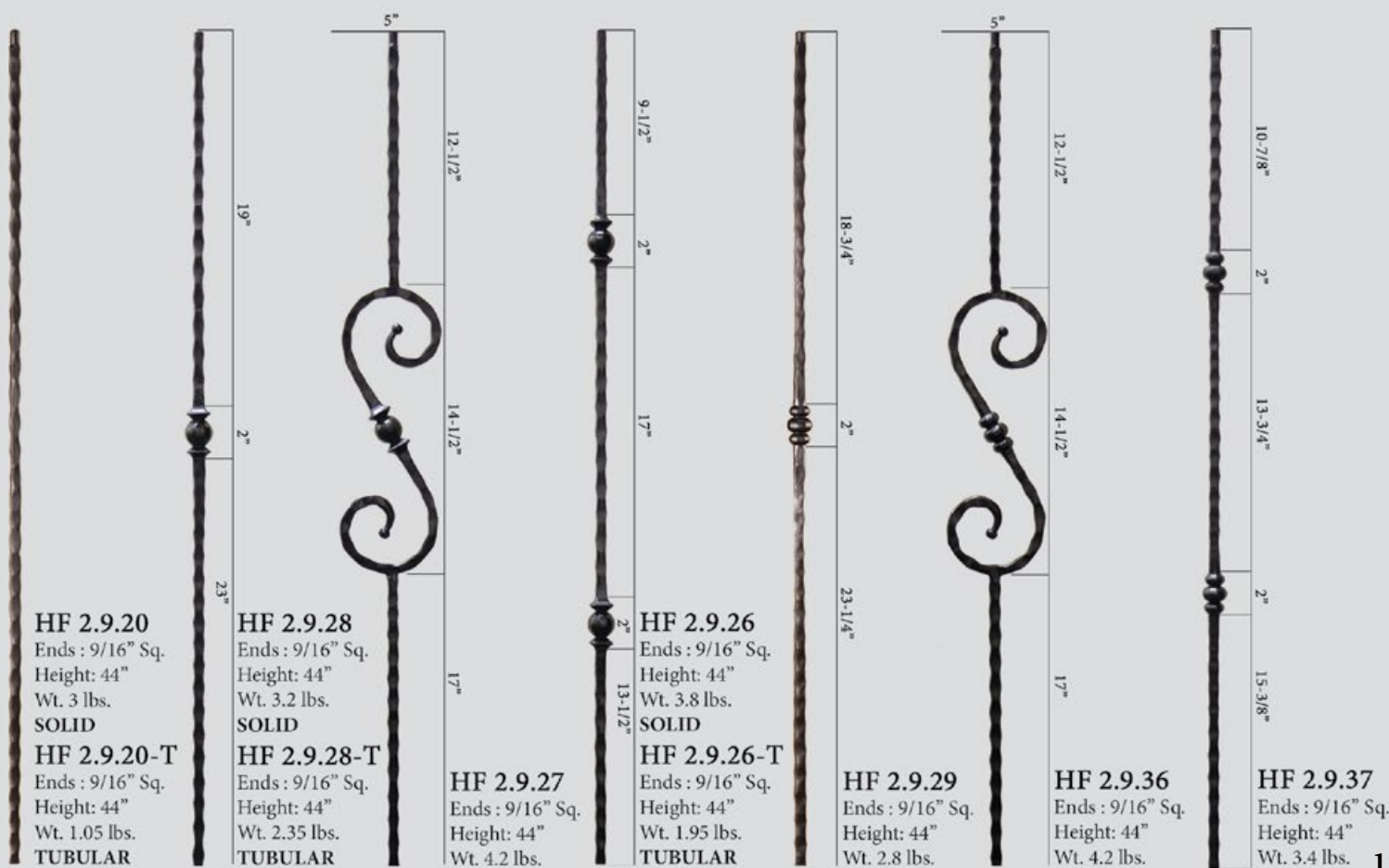
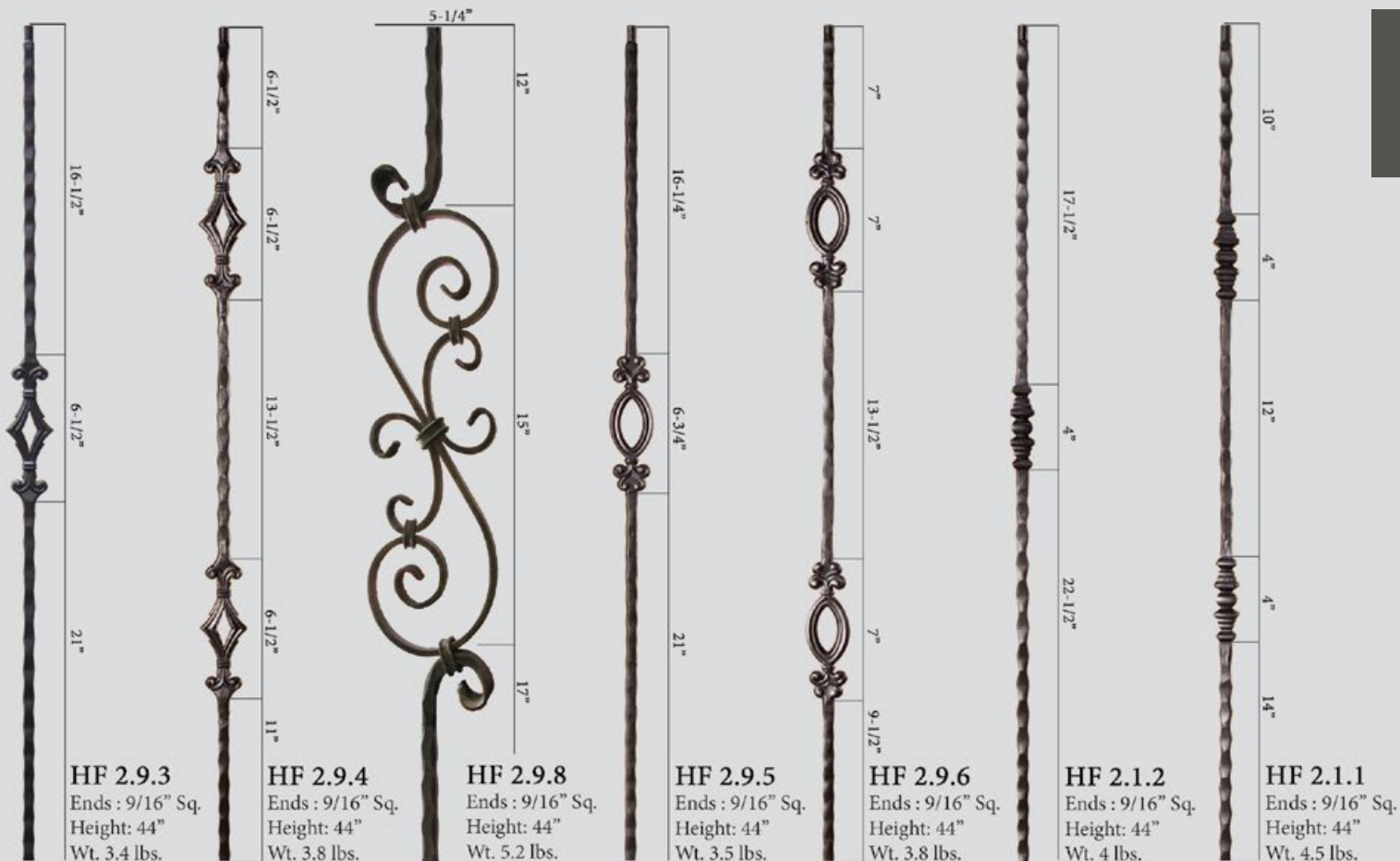
HF16.3.25  
HF16.3.41, HF16.3.42  
HF16.3.28  
HF16.3.44, HF16.3.46  
HF16.3.45, HF16.3.47  
HF16.3.31

Photos: C.  
Photos: D. H.  
Photos: G.  
Photos: R.  
Photos: S.  
Photos: T.

For photos and full accessory details see pages 48-49



<p><b>NEWEL</b></p> <p>HF 1.1.10 Ends : 1" Sq. Tapered Height: 47-1/4" Wt. 18 lbs.</p>	<p><b>NEWEL</b></p> <p>HF 1.1.11 Ends : 1" Sq. Tapered Height: 47-1/4" Wt. 18 lbs.</p>	<p><b>NEWEL</b></p> <p>HF 1.1.14 Ends : 1" Sq. Height: 47-1/4" Wt. 18 lbs. <b>SOLID</b></p> <p>HF 1.1.14-T Ends : 1" Sq. Height: 47-1/4" Wt. 2.30 lbs. <b>TUBULAR</b></p>	<p><b>NEWEL</b></p> <p>HF 1.1.15 Ends : 1" Sq. Height: 47-1/4" Wt. 18 lbs. <b>SOLID</b></p> <p>HF 1.1.15-T Ends : 1" Sq. Height: 47-1/4" Wt. 5.30 lbs. <b>TUBULAR</b></p>	<p>HF 2.9.12 Ends : 9/16" Sq. Tapered Height: 44" Wt. 3.8 lbs.</p>	<p>HF 2.9.11 Ends : 9/16" Sq. Height: 44" Wt. 5 lbs.</p>	<p>HF 2.9.13 Ends : 9/16" Sq. Tapered Height: 44" Wt. 5.5 lbs.</p>
--	--	---	---	--	--	--





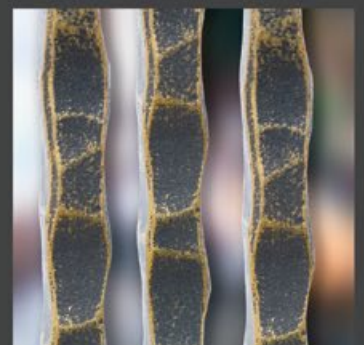
# ORLEANS

Oil Rubbed Bronze (shown)

House of Forgings is pleased to feature our Orleans Series balusters which is a tribute to the renowned culture, customs and architecture of the great city of New Orleans. These exclusive designs are available with single or double elements and finished in Oil Rubbed Bronze and Vintage Brass patinas.

*Orleans*

Oil Rubbed Bronze (shown)



Vintage Brass (shown)

# ORLEANS

SQUARE HAND HAMMERED



## Finishes & Patinas



RAW IRON  
(RAW)



OIL RUBBED  
BRONZE  
(ORB)



VINTAGE  
BRASS  
(VB)



NEWEL

**HF 1.1.14**  
Ends : 1" Sq.  
Height: 47"  
Wt. 18 lbs.



**HF 2.9.20**  
Ends : 9/16" Sq.  
Height: 44"  
Wt. 3 lbs.



**HF 2.9.23**  
Ends : 9/16" Sq.  
Height: 44"  
Wt. 3.5 lbs.



**HF 2.9.24**  
Ends : 9/16" Sq.  
Height: 44"  
Wt. 3.9 lbs.

## ACCESSORIES

Level base shoes  
Level base collars  
Angled base shoes  
Adjustable level base shoes  
Adjustable angled base shoes  
Newel mounting kit

**HF16.3.25**  
**HF16.3.41, HF16.3.42**  
**HF16.3.28**  
**HF16.3.44, HF16.3.46**  
**HF16.3.45, HF16.3.47**  
**HF16.3.31**

Photos: C.  
Photos: D. H.  
Photos: G.  
Photos: R.  
Photos: S.  
Photos: T.

For photos and full accessory details see pages 48-49





# MONTE CARLO

Oil Rubbed Bronze (shown)

Drawing inspiration from the great Roman columns, the Monte Carlo series stands alone in style and elegance. The robust designs compliment the prominence of even the grandest estates. The intricately cast components are highlighted by the Oil Rubbed Bronze patina.

Oil Rubbed Bronze (shown)

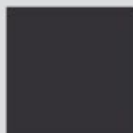


# MONTE CARLO

ROUND



## Finishes & Patinas



SATIN BLACK  
(STB)



OIL RUBBED  
BRONZE  
(ORB)



**HF 18.1.1-T**  
Ends : 1-3/16" Rd.  
Height: 48"  
Wt. 18.55 lbs.  
**TUBULAR**

\*Middle section is hollow cast iron,  
ends are hollow cast steel



**HF 18.2.1-T**  
Ends : 5/8" Rd.  
Height: 44"  
Wt. 1.75 lbs.  
**TUBULAR**

\*Middle section is hollow cast aluminum, ends are hollow cast steel



**HF 18.2.2-T**  
Ends : 5/8" Rd.  
Height: 44"  
Wt. 1.50 lbs.  
**TUBULAR**

## ACCESSORIES

Level base shoes  
Angled base shoes  
Newel mounting kit

**HF16.3.50**  
**HF16.3.51**  
**HF16.3.14**

Photos: I.  
Photos: M.  
Photos: U.

For photos and full accessory details see pages 48-49







# ENDECOR

Vintage Brass (shown)

A House of Forgings exclusive, the Endecor® balustrade system has been featured by some of the top homebuilders in the nation. For the discerning client who wants to stand apart, these balusters are truly unique in form and function.

US D672,064 S  
BALUSTER END PIECE



Satin Black (shown)



Additional U.S and Canadian patents pending.

# ENDECOR®

SQUARE



## Finishes & Patinas



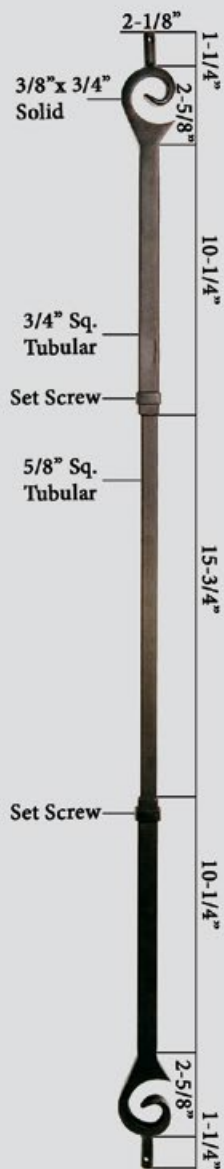
SATIN BLACK  
(STB)



OIL RUBBED  
BRONZE  
(ORB)

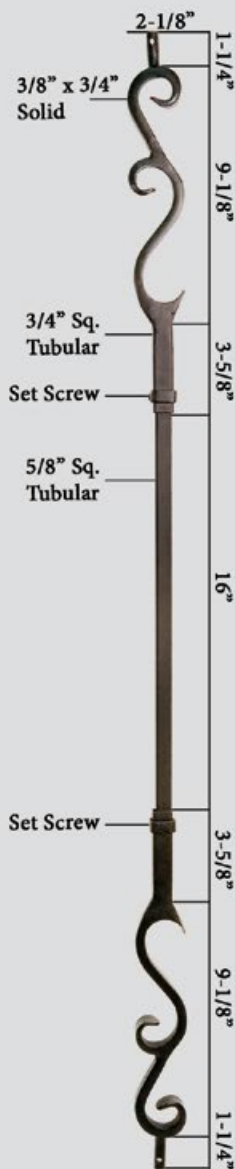


VINTAGE  
BRASS  
(VB)



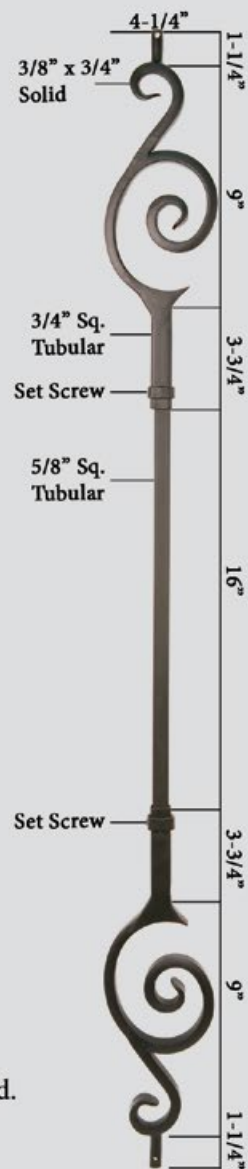
**HF16.7.1**

Ends : 9/16" Rd.  
Height: 44"  
Wt. 3.8 lbs.



**HF16.7.2**

Ends : 9/16" Rd.  
Height: 44"  
Wt. 3.8 lbs.



**HF16.7.3**

Ends : 9/16" Rd.  
Height: 44"  
Wt. 3.8 lbs.

↑  
US D672,064 S  
BALUSTER END PIECE

Additional U.S and Canadian patents pending.



# DESIGNER



Oil Rubbed Bronze (shown)

The designer series offers an upgraded look at an affordable price for homebuilders and homeowners alike. These hollow balusters are offered in square or round and compliment a wide range of architectural styles.

Oil Rubbed Bronze (shown)



Oil Rubbed Bronze (shown)

# DESIGNER TUBULAR

ROUND

SQUARE



## Finishes & Patinas



SATIN BLACK  
(STB)



OIL RUBBED  
BRONZE  
(ORB)



**HF 16.8.1**  
Ends : 5/8" Rd.  
Height: 44"  
Wt. 2 lbs.  
TUBULAR



**HF 16.8.2**  
Ends : 5/8" Rd.  
Height: 44"  
Wt. 2 lbs.  
TUBULAR



**HF 16.8.3**  
Ends : 5/8" Rd.  
Height: 44"  
Wt. 2 lbs.  
TUBULAR



**HF 16.8.4**  
Ends : 5/8" Rd.  
Height: 44"  
Wt. 3 lbs.  
TUBULAR



**HF 16.8.5**  
Ends : 5/8" Rd.  
Height: 44"  
Wt. 3 lbs.  
TUBULAR



**HF 16.8.6**  
Ends : 5/8" Sq.  
Height: 44"  
Wt. 2 lbs.  
TUBULAR



**HF 16.8.10**  
Ends : 5/8" Sq.  
Height: 44"  
Wt. 2 lbs.  
TUBULAR



**HF 16.8.11**  
Ends : 5/8" Sq.  
Height: 44"  
Wt. 2 lbs.  
TUBULAR



**HF 16.8.8**  
Ends : 5/8" Sq.  
Height: 44"  
Wt. 3 lbs.  
TUBULAR



**HF 16.8.9**  
Ends : 5/8" Sq.  
Height: 44"  
Wt. 4 lbs.  
TUBULAR

## ACCESSORIES

Level base shoes  
Angled base shoes

**HF16.3.35, HF16.3.38**  
**HF16.3.36, HF16.3.39**

Photos: J. C.  
Photos: N. G.

For photos and full accessory details see pages 48-49





# STAINLESS STEEL



Stainless steel is a mainstay in the modern and contemporary home decor market. The simple, honest lines of this profile is the perfect compliment to your urban dwelling. Now, offered in a more affordable tubular style for the budget savy buyer.



# STAINLESS STEEL



ROUND



STAINLESS STEEL

<p><b>NEWEL</b></p> <p>17-1/2"</p> <p>2"</p> <p>27-1/2"</p> <p><b>HF17.1.2</b> Ends : 1-3/16" Rd. Height: 47" Wt. 18 lbs. <b>SOLID</b></p> <p><b>HF17.1.2-T</b> Ends : 1-3/16" Rd. Height: 47" Wt. 5.7 lbs. <b>TUBULAR</b></p>	<p><b>NEWEL</b></p> <p>18-1/8"</p> <p>1"</p> <p>24-7/8"</p> <p><b>HF17.11.3</b> Ends : 9/16" Rd. Height: 44" Wt. 3.8 lbs. <b>SOLID</b></p>	<p>9-3/4"</p> <p>1"</p> <p>18-3/4"</p> <p>1"</p> <p>13-1/2"</p> <p><b>HF17.11.4</b> Ends : 9/16" Rd. Height: 44" Wt. 4 lbs. <b>SOLID</b></p>	<p>18-1/4"</p> <p>1"</p> <p>24-3/4"</p> <p><b>HF17.11.5</b> Ends : 9/16" Rd. Height: 44" Wt. 3.5 lbs. <b>SOLID</b></p> <p><b>HF17.11.5-T</b> Ends : 9/16" Rd. Height: 44" Wt. 1.25 lbs. <b>TUBULAR</b></p>	<p>10-3/4"</p> <p>1"</p> <p>18-5/8"</p> <p>1"</p> <p>17-5/8"</p> <p><b>HF17.11.21-T</b> Ends : 9/16" Rd. Height: 44" Wt. 1.25 lbs. <b>TUBULAR</b></p>	<p><b>HF17.11.23-T</b> Ends : 9/16" Rd. Height: 44" Wt. 1.25 lbs. <b>TUBULAR</b></p>
--	--	--	--	---	--

## ACCESSORIES

Level base collar  
Newel mounting kit

**HF17.11.22**  
**HF17.2.3**

Photos: L.  
Photos: V.

For photos and full accessory details see pages 48-49





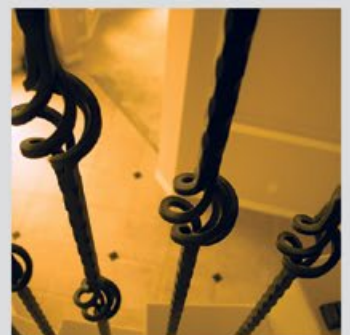


## SANTA FE

Satin Black (shown)

Our Santa Fe collection of edge hammered balusters are reminiscent of the old world Spanish architecture found in rustic Mexican villas. The bold, distinct hammering is the key to turning your home into an impressive estate.

Satin Black (shown)



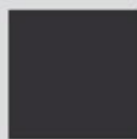


# SANTA FE

SQUARE EDGE HAMMERED



## Finishes & Patinas



SATIN BLACK  
(STB)



**HF 16.3.8**  
Ends : 9/16" Sq.  
Height: 44"  
Wt. 3.7 lbs.



**HF 16.1.26**  
Ends : 9/16" Sq.  
Height: 44"  
Wt. 4 lbs.



**HF 16.1.27**  
Ends : 9/16" Sq.  
Height: 44"  
Wt. 4.5 lbs.



**HF 16.1.15**  
Ends : 9/16" Sq.  
Height: 44"  
Wt. 3 lbs.



**HF 16.1.22**  
Ends : 9/16" Sq.  
Height: 44"  
Wt. 3.6 lbs.

## ACCESSORIES

Level base shoes

Angled base shoes

Adjustable level base shoes

Adjustable angled base shoes

**HF16.3.3**

**HF16.3.17**

**HF16.3.44, HF16.3.46**

**HF16.3.45, HF16.3.47**

Photos: A.

Photos: E.

Photos: R.

Photos: S.

For photos and full accesory details see pages 48-49





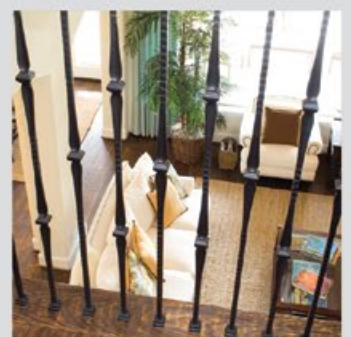


# GOTHIC

Oil Rubbed Copper (shown)

The inspiration for our Gothic series was the timeless ironwork featured in many European castles and estates. These prominent designs will compliment old world hardware and fixtures found throughout many homes today.

Oil Rubbed Copper (shown)



# GOTHIC

## SQUARE FACE HAMMERED



## Finishes & Patinas



RAW IRON  
(RAW)



SATIN BLACK  
(STB)



COPPER VEIN  
(CV)



OIL RUBBED  
BRONZE  
(ORB)



OIL RUBBED  
COPPER  
(ORC)



NEWEL

**HF 16.5.6**  
Ends : 1-3/16" Sq.  
Height: 48"  
Wt. 22 lbs.



**HF 16.1.7**  
Ends : 9/16" Sq.  
Height: 44"  
Wt. 4 lbs.



**HF 16.5.2**  
Ends : 9/16" Sq.  
Height: 44"  
Wt. 3.5 lbs.



**HF 16.1.8**  
Ends : 9/16" Sq.  
Height: 44"  
Wt. 3.8 lbs.



**HF 16.1.9**  
Ends : 9/16" Sq.  
Height: 44"  
Wt. 4.5 lbs.

## ACCESSORIES

Level base shoes

Level base collars

Angled base shoes

Adjustable level base shoes

Adjustable angled base shoes

Newel mounting kit

**HF16.3.3, HF16.3.20, HF16.3.25**

**HF16.3.41, HF16.3.42**

**HF16.3.17, HF16.3.28**

**HF16.3.44, HF16.3.46**

**HF16.3.45, HF16.3.47**

**HF16.2.3**

Photos: A. A. C.

Photos: D. H.

Photos: E. G.

Photos: R.

Photos: S.

Photos: T.

For photos and full accessory details see pages 48-49







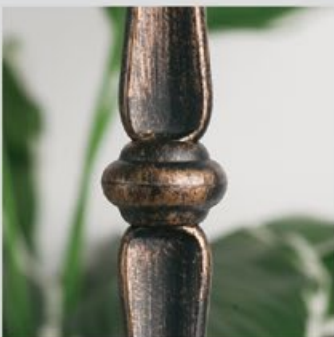
Satin Black (shown)

The style of this collection provides a sleek appearance that strikes a perfect balance between traditional and contemporary.

Antique Nickel (shown)



# ROUND



Oil Rubbed Bronze (shown)



Copper Vein (shown)



Copper Vein (shown)



# ROUND

## ROUND SMOOTH



# Finishes & Patinas



RAW IRON  
(RAW)



SATIN BLACK  
(STB)



COPPER VEIN  
(CV)



OIL RUBBED  
BRONZE  
(ORB)



ASH GREY  
(AG)

	NEWELS	HF16.5.10	HF16.5.11	HF16.5.11-T	HF1.1.19	BALUSTERS	HF16.2.2	HF16.1.17	HF16.1.18	HF16.1.19	HF16.1.20	HF16.1.25-R	HF2.11.3	HF2.11.3-T	HF2.11.4	HF2.11.4-T	HF2.11.16	HF2.11.16-T	HF2.8.18	HF16.8.1
RAW			•		•		•					•	•	•	•	•	•	•	•	
STB		•	•		•		•	•	•	•	•	•	•	•	•	•	•	•	•	•
CV		•	•				•	•	•	•	•	•								
ORB			•		•							•	•	•	•	•	•	•	•	•
AG				•										•		•				•

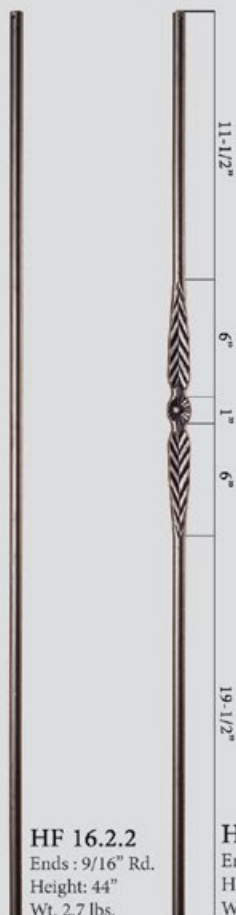


**HF 16.5.10**  
Ends : 1-3/16" Rd.  
Height: 48"  
Wt. 19 lbs.

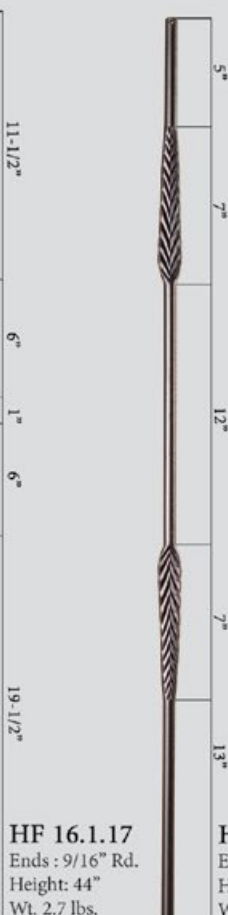


**HF 16.5.11**  
Ends : 1-3/16" Rd.  
Height: 48"  
Wt. 19 lbs.  
**SOLID**

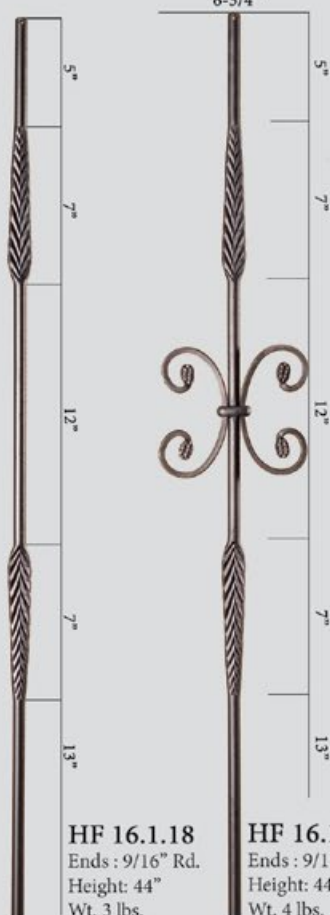
**HF 16.5.11-T**  
Ends : 1-3/16" Rd.  
Height: 48"  
Wt. 5.7 lbs.  
**TUBULAR**



**HF 16.2.2**  
Ends : 9/16" Rd.  
Height: 44"  
Wt. 2.7 lbs.



**HF 16.1.17**  
Ends : 9/16" Rd.  
Height: 44"  
Wt. 2.7 lbs.



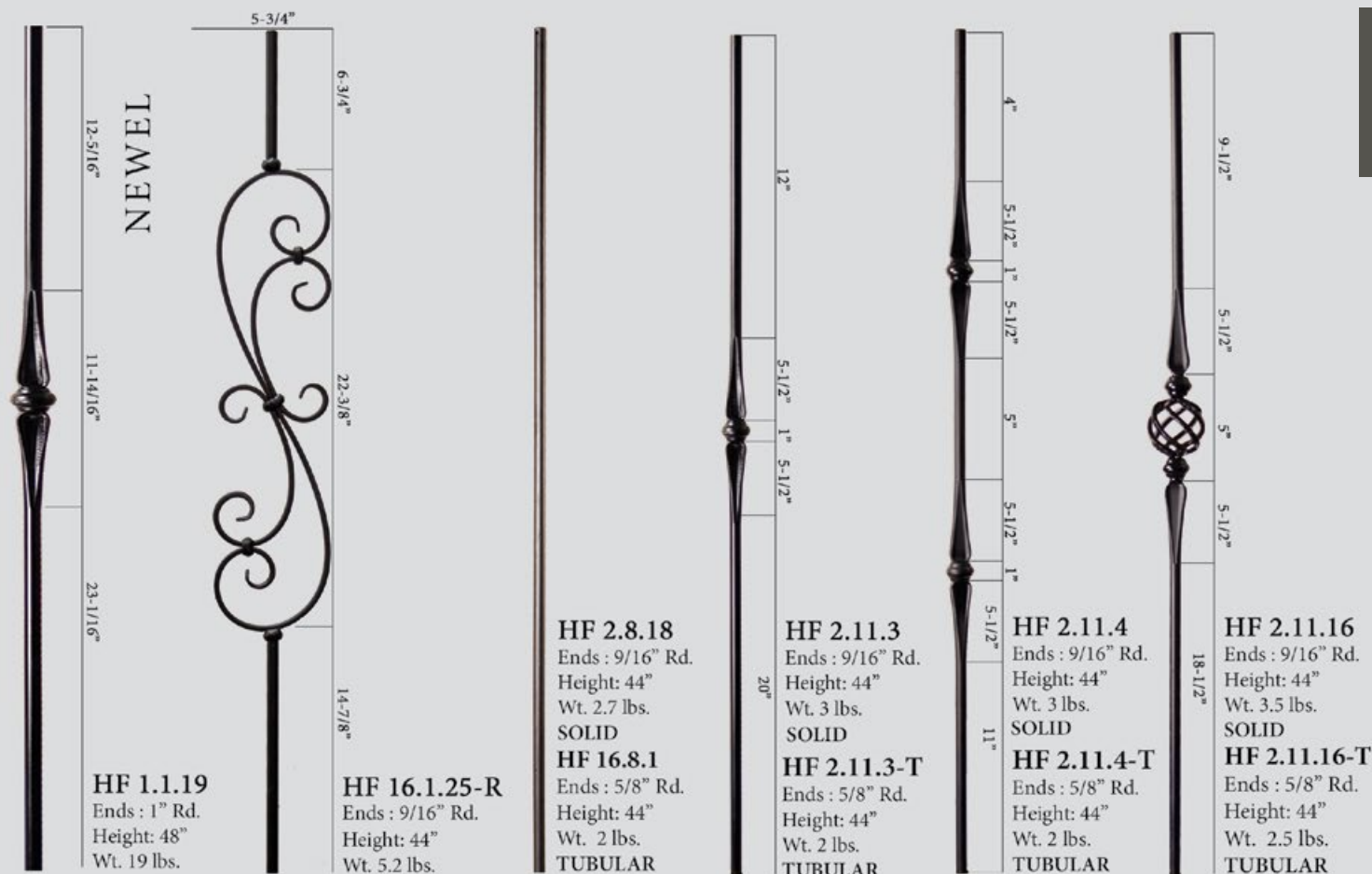
**HF 16.1.18**  
Ends : 9/16" Rd.  
Height: 44"  
Wt. 3 lbs.



**HF 16.1.19**  
Ends : 9/16" Rd.  
Height: 44"  
Wt. 4 lbs.



**HF 16.1.20**  
Ends : 9/16" Rd.  
Height: 44"  
Wt. 5 lbs.



## ACCESSORIES

Level base shoes  
Level base collars  
Angled base shoes  
Adjustable level base shoes  
Adjustable angled base shoes  
Level base shoe, fits 5/8"  
Angled base shoe, fits 5/8"  
Newel mounting kit

**HF16.3.13, HF16.3.26**  
**HF16.3.40, HF16.3.43**  
**HF16.3.16, HF16.3.27**  
**HF16.3.44, HF16.3.46**  
**HF16.3.45, HF16.3.47**  
**HF16.3.35**  
**HF16.3.36**  
**HF16.3.14, HF16.3.33**

Photos: L. J.  
Photos: K. O.  
Photos: M. N.  
Photos: R.  
Photos: S.  
Photos: J.  
Photos: N.  
Photos: U.

For photos and full accessory details see pages 48-49







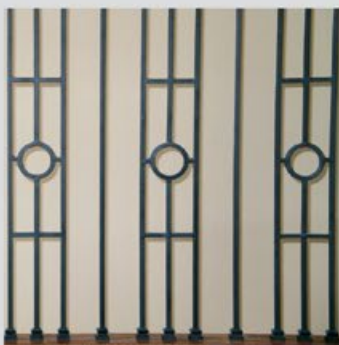
Copper Vein (shown)

The endless baluster combinations in this series offers a match for your individual taste and style. These balusters compliment our Scroll, Twist and Ribbon series.

Silver Vein (shown)



VERSATILE





# VERSATILE SQUARE



## Finishes & Patinas



RAW IRON  
(RAW)



SATIN BLACK  
(STB)



SILVER VEIN  
(SP)



COPPER VEIN  
(CV)



OIL RUBBED  
BRONZE  
(ORB)



OIL RUBBED  
COPPER  
(ORC)



ANTIQUE  
NICKEL  
(AN)



ASH GREY  
(AG)

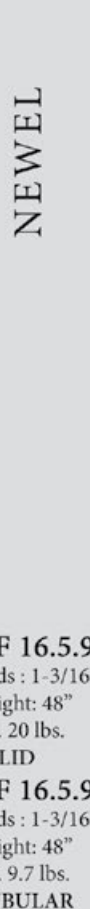
	NEWELS	HF16.5.8	HF16.5.8-T	HF16.5.9	HF16.5.9-T	BALUSTERS	HF16.2.1	HF16.2.1-T	HF16.2.1-50	HF16.1.34	HF16.1.34-T	HF16.1.35	HF16.1.35-T	HF16.1.45	HF16.1.45-T	HF2.10.1	HF2.2.3	HF16.1.25	HF16.1.25-T	HF16.1.25-S
RAW		•		•			•	•		•	•	•	•				•	•	•	
STB		•		•			•	•	•	•	•	•	•	•	•	•	•	•	•	•
AG			•		•			•			•		•						•	
SP		•		•			•	•		•	•	•	•			•		•	•	
CV		•		•			•	•		•	•	•	•	•	•	•		•	•	
ORB		•		•			•	•		•	•	•	•			•	•	•	•	•
ORC		•		•			•	•		•	•	•	•	•	•	•		•	•	•
AN		•		•			•			•		•						•		



**HF 16.5.8**  
Ends : 1-3/16" Sq.  
Height: 48"  
Wt. 19 lbs.  
SOLID



**HF 16.5.8-T**  
Ends : 1-3/16" Sq.  
Height: 48"  
Wt. 4.8 lbs.  
TUBULAR



**HF 16.5.9**  
Ends : 1-3/16" Sq.  
Height: 48"  
Wt. 20 lbs.  
SOLID



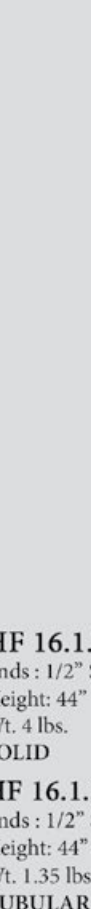
**HF 16.5.9-T**  
Ends : 1-3/16" Sq.  
Height: 48"  
Wt. 9.7 lbs.  
TUBULAR



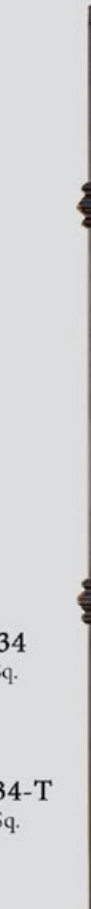
**HF 16.2.1**  
Ends : 1/2" Sq.  
Height: 44"  
Wt. 3 lbs.  
SOLID



**HF 16.2.1-T**  
Ends : 1/2" Sq.  
Height: 44"  
Wt. 1.2 lbs.  
TUBULAR



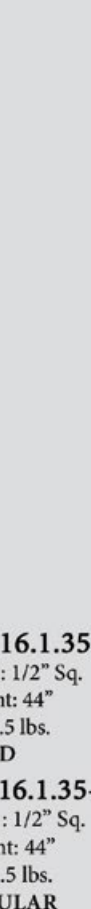
**HF 16.2.1-50**  
Ends : 1/2" Sq.  
Height: 50"  
Wt. 3.2 lbs.  
SOLID



**HF 16.1.34**  
Ends : 1/2" Sq.  
Height: 44"  
Wt. 4 lbs.  
SOLID



**HF 16.1.34-T**  
Ends : 1/2" Sq.  
Height: 44"  
Wt. 1.35 lbs.  
TUBULAR



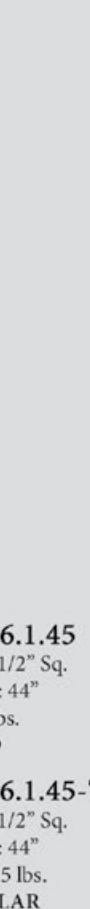
**HF 16.1.35**  
Ends : 1/2" Sq.  
Height: 44"  
Wt. 3.5 lbs.  
SOLID



**HF 16.1.35-T**  
Ends : 1/2" Sq.  
Height: 44"  
Wt. 1.5 lbs.  
TUBULAR



**HF 16.1.45**  
Ends : 1/2" Sq.  
Height: 44"  
Wt. 4 lbs.  
SOLID



**HF 16.1.45-T**  
Ends : 1/2" Sq.  
Height: 44"  
Wt. 1.55 lbs.  
TUBULAR



**HF 2.10.1**  
Ends : 1/2" Sq.  
Height: 44"  
Wt. 4.2 lbs.



**HF 2.2.3**  
Ends : 1/2" Sq.  
Height: 44"  
Wt. 3 lbs.



**HF 16.1.25**  
Ends : 1/2" Sq.  
Height: 44"  
Wt. 5.2 lbs.  
**SOLID**

**HF 16.1.25-T**  
Ends : 1/2" Sq.  
Height: 44"  
Wt. 3.85 lbs.  
**TUBULAR**



**HF 16.1.25-S**  
Ends : 1/2" Sq.  
Height: 44"  
Wt. 5.2 lbs.

## ACCESSORIES

Level base shoes  
Level base collars  
Angled base shoes  
Adjustable level base shoes  
Adjustable angled base shoes  
Versatile style knuckle  
Newel mounting kit

**HF16.3.1, HF16.3.19, HF16.3.29**  
**HF16.3.4, HF16.3.5,**  
**HF16.3.2, HF16.3.30**  
**HF16.3.44, HF16.3.46**  
**HF16.3.45, HF16.3.47**  
**HF16.5.1**  
**HF16.2.3**

Photos: A. A. C.  
Photos: D. H.  
Photos: E. G.  
Photos: R.  
Photos: S.  
Photos: F.  
Photos: T.

For photos and full accessory details see pages 48-49







Satin Black (shown)

The ribbon style twist in this series pairs nicely with balusters from the Scroll and Versatile series. The ribbon is accented nicely by the Oil Rubbed Bronze patina as well as the Copper Vein finish.

Copper Vein (shown)







# RIBBON

SQUARE



## Finishes & Patinas



RAW IRON  
(RAW)



SATIN BLACK  
(STB)



COPPER VEIN  
(CV)



OIL RUBBED  
BRONZE  
(ORB)



OIL RUBBED  
COPPER  
(ORC)

	NEWELS	HF16.5.7	BALUSTERS	HF16.1.5	HF16.1.6	HF16.3.6	HF16.3.7	HF16.1.10	HF16.1.11
RAW		•		•	•				
STB		•		•	•	•	•	•	•
CV		•		•	•	•	•	•	•
ORB		•		•	•	•	•	•	•
ORC		•		•	•	•	•	•	•



NEWEL

**HF 16.5.7**  
Ends : 1-3/16" Sq.  
Height: 48"  
Wt. 19 lbs.



**HF 16.1.5**  
Ends : 1/2" Sq.  
Height: 44"  
Wt. 3.2 lbs.



**HF 16.1.6**  
Ends : 1/2" Sq.  
Height: 44"  
Wt. 3 lbs.



**HF 16.3.6**  
Ends : 1/2" Sq.  
Height: 44"  
Wt. 3.2 lbs.



**HF 16.3.7**  
Ends : 1/2" Sq.  
Height: 44"  
Wt. 4 lbs.



**HF 16.1.10**  
Ends : 1/2" Sq.  
Height: 44"  
Wt. 3.6 lbs.



**HF 16.1.11**  
Ends : 1/2" Sq.  
Height: 44"  
Wt. 4.1 lbs.

## ACCESSORIES

Level base shoes  
Level base collars  
Angled base shoes  
Adjustable level base shoes  
Adjustable angled base shoes  
Versatile style knuckle  
Newel mounting kit

**HF16.3.1, HF16.3.19, HF16.3.29**  
**HF16.3.4, HF16.3.5,**  
**HF16.3.2, HF16.3.30**  
**HF16.3.44, HF16.3.46**  
**HF16.3.45, HF16.3.47**  
**HF16.5.1**  
**HF16.2.3**

Photos: A. A. C.  
Photos: D. H.  
Photos: E. G.  
Photos: R.  
Photos: S.  
Photos: F.  
Photos: T.

For photos and full accessory details see pages 48-49







Copper Vein (shown)

This popular twist and basket design is a mainstay featured in many new homes. These balusters and newels are offered in an extensive range of finishes and patinas. They combine seamlessly with profiles from the Scroll and Versatile series.

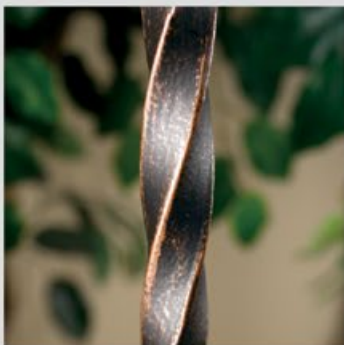
Oil Rubbed Copper (shown)



# TWIST



Satin Black (shown)



Oil Rubbed Bronze (shown)



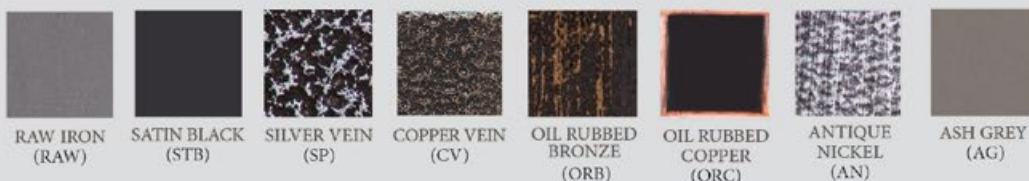
Antique Nickel (shown)



# TWIST SQUARE



## Finishes & Patinas



	NEWELS	HF16.5.4	HF16.5.4-T	HF16.5.5	HF16.5.5-T	BALUSTERS	HF16.1.1	HF16.1.1-T	HF16.1.2	HF16.1.2-T	HF16.1.3	HF16.1.3-T	HF16.1.4	HF16.1.4-T	HF16.1.21	HF16.1.21-T	HF16.1.16	HF16.2.4	HF16.2.5	HF16.2.6	HF16.1.41
RAW		•		•			•	•	•	•	•	•	•	•	•	•		•	•	•	
STB		•		•			•	•	•	•	•	•	•	•	•	•	•	•	•	•	•
AG			•		•			•		•				•		•					
SP		•		•			•	•	•	•	•	•	•	•	•	•	•				
CV		•		•			•	•	•	•	•	•	•	•	•	•	•				
ORB		•		•			•	•	•	•	•	•	•	•	•	•	•				
ORC		•		•			•	•	•	•	•	•	•	•	•	•	•				
AN		•		•			•		•		•		•		•		•				



**HF 16.5.4**  
Ends : 1-3/16" Sq.  
Height: 48"  
Wt. 18 lbs.  
**SOLID**  
**HF 16.5.4-T**  
Ends : 1-3/16" Sq.  
Height: 48"  
Wt. 5.5 lbs.  
**TUBULAR**



**HF 16.5.5**  
Ends : 1-3/16" Sq.  
Height: 48"  
Wt. 20 lbs.  
**SOLID**  
**HF 16.5.5-T**  
Ends : 1-3/16" Sq.  
Height: 48"  
Wt. 7.6 lbs.  
**TUBULAR**



**HF 16.1.1**  
Ends : 1/2" Sq.  
Height: 44"  
Wt. 3 lbs.  
**SOLID**  
**HF 16.1.1-T**  
Ends : 1/2" Sq.  
Height: 44"  
Wt. 1.2 lbs.  
**TUBULAR**



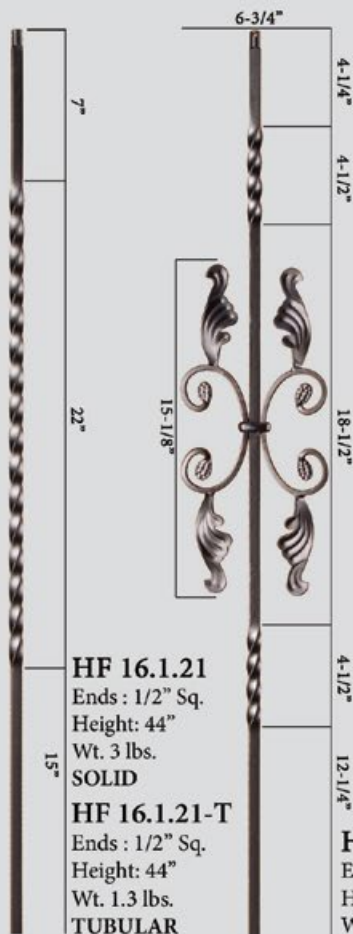
**HF 16.1.2**  
Ends : 1/2" Sq.  
Height: 44"  
Wt. 3 lbs.  
**SOLID**  
**HF 16.1.2-T**  
Ends : 1/2" Sq.  
Height: 44"  
Wt. 1.15 lbs.  
**TUBULAR**



**HF 16.1.3**  
Ends : 1/2" Sq.  
Height: 44"  
Wt. 4 lbs.  
**SOLID**  
**HF 16.1.3-T**  
Ends : 1/2" Sq.  
Height: 44"  
Wt. 1.55 lbs.  
**TUBULAR**



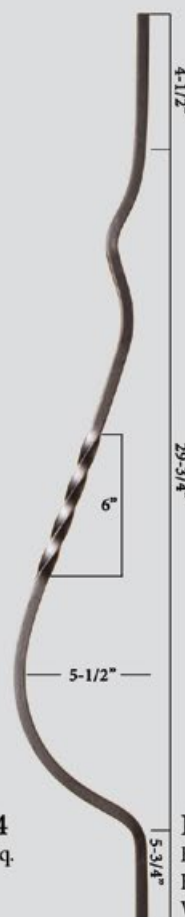
**HF 16.1.4**  
Ends : 1/2" Sq.  
Height: 44"  
Wt. 4 lbs.  
**SOLID**  
**HF 16.1.4-T**  
Ends : 1/2" Sq.  
Height: 44"  
Wt. 1.95 lbs.  
**TUBULAR**



**HF 16.1.16**  
Ends : 1/2" Sq.  
Height: 44"  
Wt. 4.5 lbs.



**HF 16.2.4**  
Ends : 1/2" Sq.  
Height: 40"  
Wt. 3 lbs.



**HF 16.2.5**  
Ends : 1/2" Sq.  
Height: 40"  
Wt. 3 lbs.



**HF 16.2.6**  
Ends : 1/2" Sq.  
Height: 40"  
Wt. 3 lbs.



**HF 16.1.41**  
Ends : 1/2" Sq.  
Height: 44"  
Wt. 7 lbs.

## ACCESSORIES

Level base shoes  
Level base collars  
Angled base shoes  
Adjustable level base shoes  
Adjustable angled base shoes  
Versatile style knuckle  
Newel mounting kit

**HF16.3.1, HF16.3.19, HF16.3.29**  
**HF16.3.4, HF16.3.5,**  
**HF16.3.2, HF16.3.30**  
**HF16.3.44, HF16.3.46**  
**HF16.3.45, HF16.3.47**  
**HF16.5.1**  
**HF16.2.3**

For photos and full accessory details see pages 48-49



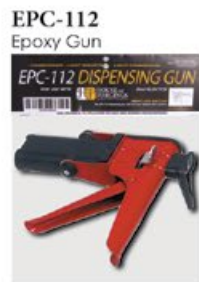
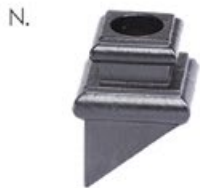
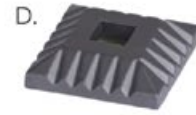
Photos: A. A. C.  
Photos: D. H.  
Photos: E. G.  
Photos: R.  
Photos: S.  
Photos: F.  
Photos: T.



# ACCESSORY SPECIFICATIONS

Photo	Part #	Description	RAW	STB	AG	SP	CV	ORB	ORC	AN	VB	SC
1/2" Square Baluster Accessories												
A.	HF16.3.1	Level base shoe, fits 1/2" square balusters, 1-5/16" square base, aluminum		•		•	•		•	•		
A.	HF16.3.19	Level base shoe with set screw, fits 1/2" square balusters, 1-5/16" square base, aluminum	•	•	•	•	•	•	•	•		
E.	HF16.3.2	Angled base shoe with set screw, fits 1/2" square balusters, 1-5/16" base, aluminum	•	•	•	•	•	•	•	•		
B.	HF16.3.21	Level base shoe with screw mount, fits 1/2" square balusters, 1-9/16" square base, aluminum		•			•					
F.	HF16.5.1	Versatile style knuckle with set screw, fits 1/2" square balusters, 1-7/16" square, aluminum	•	•		•	•	•	•	•		
C.	HF16.3.29	Oil Rubbed Bronze, level base shoe with set screw, fits 1/2" square balusters, 1-1/4" square base, cast iron		•				•				
G.	HF16.3.30	Oil Rubbed Bronze, angled base shoe with set screw, fits 1/2" square balusters, 1-1/4" base, cast iron						•				
D.	HF16.3.4	Level base collar, fits 1/2" square balusters, 2" square base, aluminum		•			•	•	•			
H.	HF16.3.5	Level base collar, fits 1/2" square balusters, 1-5/16" round base, aluminum		•			•	•	•			
9/16" Square Baluster Accessories												
A.	HF16.3.3	Level base shoe, fits 9/16" square balusters, 1-5/16" square base, aluminum		•			•		•			
A.	HF16.3.20	Level base shoe with set screw, fits 9/16" square balusters, 1-5/16" square base, aluminum		•			•	•	•			
E.	HF16.3.17	Angled base shoe with set screw, fits 9/16" square balusters, 1-5/16" base, aluminum		•			•	•	•			
C.	HF16.3.25	Level base shoe with set screw, fits 9/16" Tuscan square balusters, 1-1/4" square base, cast iron	•	•			•	•			•	•
G.	HF16.3.28	Angled base shoe with set screw, fits 9/16" Tuscan square balusters, 1-1/4" base, cast iron	•	•			•	•			•	•
D.	HF16.3.41	Level base collar, fits 9/16" square balusters, 2" square base, aluminum		•			•	•				
H.	HF16.3.42	Level base collar, fits 9/16" square balusters, 1-5/16" round base, aluminum		•				•			•	
5/8" Square Baluster Accessories												
C.	HF16.3.38	Level base shoe with set screw, fits 5/8" square balusters, 1-1/4" square base, cast iron		•				•				
G.	HF16.3.39	Angled base shoe with set screw, fits 5/8" square balusters, 1-1/4" base, cast iron		•				•				
9/16" Round Baluster Accessories												
I.	HF16.3.13	Level base shoe, fits 9/16" round balusters, 1-5/16" square base, aluminum		•			•					
M.	HF16.3.16	Angled base shoe with set screw, fits 9/16" round balusters, 1-5/16" base, aluminum		•			•					
J.	HF16.3.26	Level base shoe with set screw, fits 9/16" round balusters, 1-1/4" square base, cast iron		•			•	•			•	•
N.	HF16.3.27	Angled base shoe with set screw, fits 9/16" round balusters, 1-1/4" base, cast iron		•			•	•			•	•
K.	HF16.3.40	Level base collar, fits 9/16" round balusters, 2" square base, cast iron		•			•	•				
O.	HF16.3.43	Level base collar, fits 9/16" round balusters, 1-5/16" round base, cast iron		•				•			•	
L.	HF17.11.22	Level base collar, fits 9/16" round stainless steel balusters, 1-1/2" round base, stainless steel										
5/8" Round Baluster Accessories												
J.	HF16.3.35	Level base shoe with set screw, fits 5/8" round balusters, 1-1/4" square base, cast iron		•	•		•	•				
N.	HF16.3.36	Angled base shoe with set screw, fits 5/8" round balusters, 1-1/4" base, cast iron		•	•		•	•				
I.	HF16.3.50	Level base shoe with set screw, fits 5/8" round balusters, 1-5/16" square base, aluminum		•				•				
M.	HF16.3.51	Angled base shoe with set screw, fits 5/8" round balusters, 1-5/16" base, aluminum		•				•				
Adjustable Shoes/Collars have a flexible insert that allows them to be used with either square or round balusters ranging in size from 1/2" to 9/16". Epoxy must be used to permanently secure.												
R.	HF16.3.44	Level base shoe, fits 1/2" - 9/16" square or round balusters, 1-5/16" square base, cast iron		•			•	•			•	•
R.	HF16.3.46	Level base shoe, fits 1/2" - 9/16" square or round balusters, 1-1/2" square base, cast iron		•			•	•			•	•
S.	HF16.3.45	Angled base shoe, fits 1/2" - 9/16" square or round balusters, 1-5/16" base, cast iron		•			•	•			•	•
S.	HF16.3.47	Angled base shoe, fits 1/2" - 9/16" square or round balusters, 1-1/2" base, cast iron		•			•	•			•	•
P.	HF16.3.24	Level base collar, fits 1/2" - 9/16" square or round balusters, 1-11/16" square base, aluminum		•								
Q.	HF16.3.23	Level base collar, fits 1/2" - 9/16" square or round balusters, 1-11/16" round base, aluminum		•								
Newel Mounting Kits												
T.	HF16.2.3	Newel mounting kit with level base shoe, fits 1-3/16" square newels, 3-1/8" square base, cast iron	•	•	•	•	•	•	•	•		
T.	HF16.3.31	Newel mounting kit with level base shoe, fits 1" square newels, 3-1/8" square base, cast iron	•	•			•	•			•	•
U.	HF16.3.14	Newel mounting kit with level base shoe, fits 1-3/16" round newels, 3-1/8" square base, cast iron	•	•	•		•					
U.	HF16.3.33	Newel mounting kit with level base shoe, fits 1" round newels, 3-1/8" square base, cast iron	•	•	•		•	•			•	•
V.	HF17.2.3	Newel mounting kit with level base collar, fits 1-3/16" round stainless steel newels, 3-1/4" round base, stainless steel										
Handrail Brackets												
W.	HE3002	Handrail bracket, 1-1/4" x 2-3/8" mounting plate, extends out 3" from wall, aluminum Also available in Brushed Chrome HFBC.3002, Polished Brass HFPB.3002		•		•	•	•	•			•
X.	HE3003	Handrail bracket, 2-1/16" round mounting plate, extends out 3" from wall, aluminum Also available in Chrome HFCE.3003, Brushed Chrome HFBC.3003, Nickel HFNL.3003		•	•	•	•	•	•	•	•	•

# ACCESSORY PROFILES





## Forged Panels

**House of Forgings  
is dedicated to  
providing superior  
products that meet the  
highest standards of  
architects,  
homebuilders  
and homeowners.**

We are pleased to provide a full line of prefabricated ornamental iron components. These elegant products allow for the look and feel of a fully custom fabricated iron stair or railing system. In addition to cost savings, installation time is greatly reduced compared to traditional fabrication.

STAIR & RAILING PRODUCTS BY







Rebecca panels paired with Monte Carlo balusters (shown)



# REBECCA

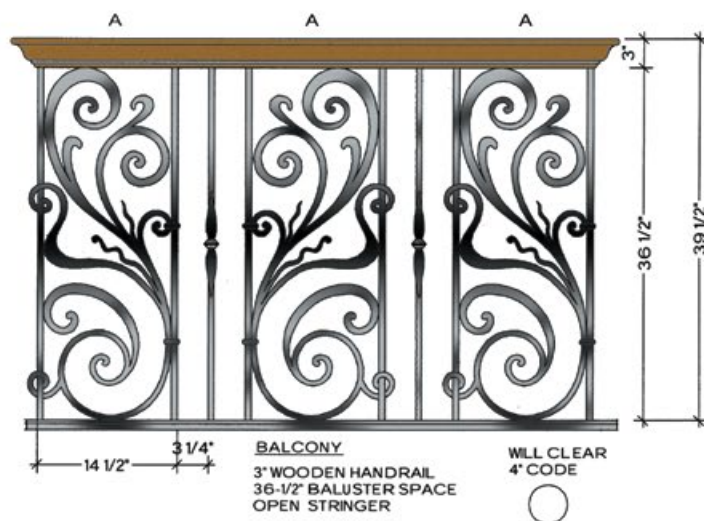
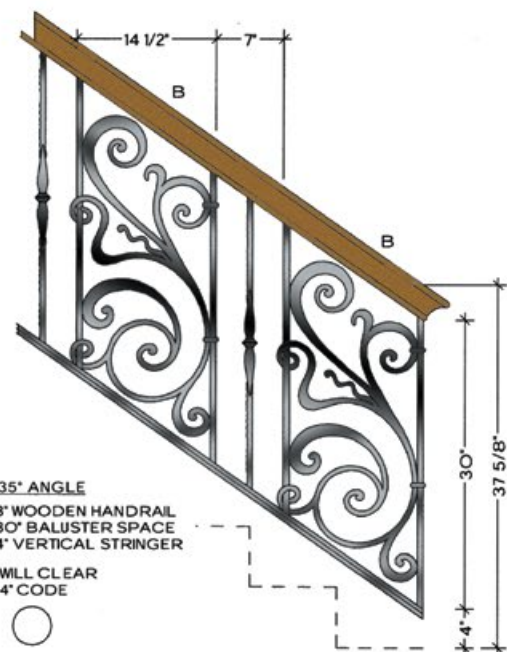


Rebecca HFRB.B1 (shown)

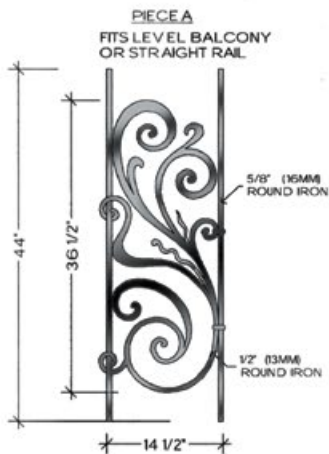
5/8" ROUND  
IRON



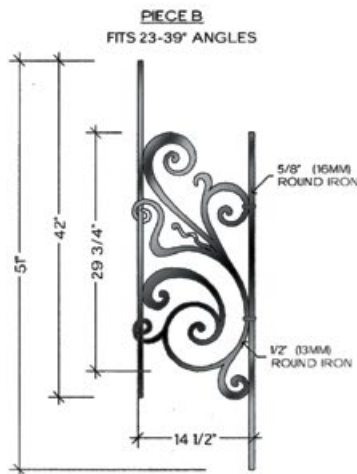
1/2" ROUND  
IRON



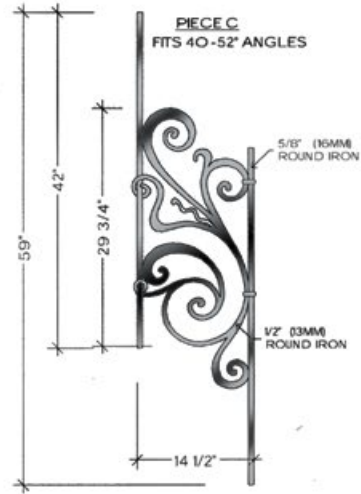
# REBECCA



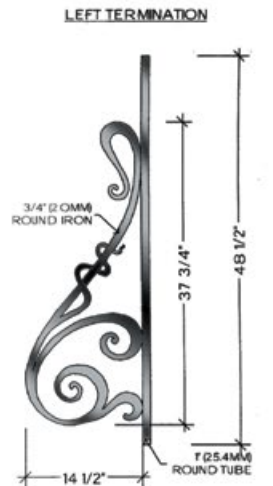
TOP VIEW  
A-1  
FLAT  
**HFRB.A1**



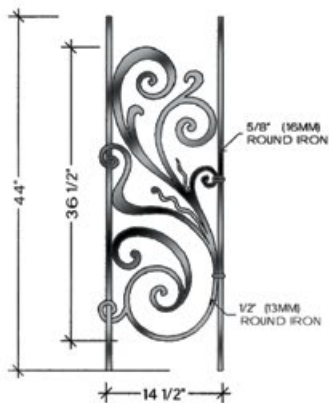
TOP VIEW  
B-1  
FLAT  
**HFRB.B1**



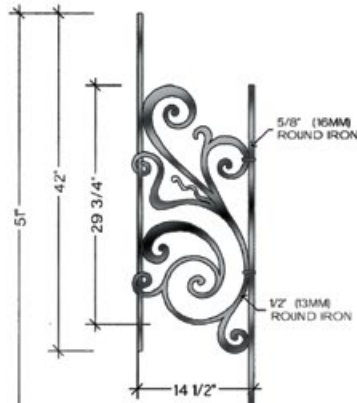
TOP VIEW  
C-1  
FLAT  
**HFRB.C1**



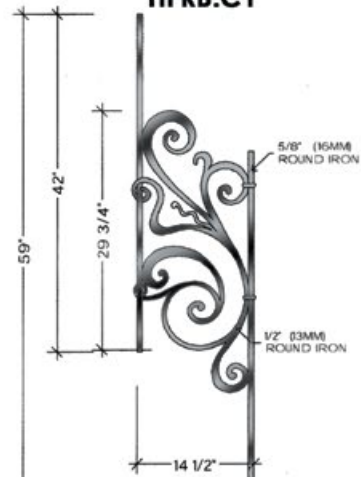
TOP VIEW  
4 1/2" RADIUS  
**HFRB.TERM LF**



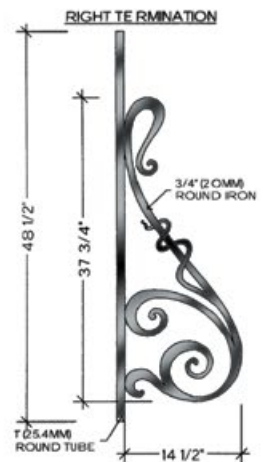
TOP VIEW  
A-2  
ALL RADIUS FROM 28" TO 20'-0"  
**HFRB.A2**



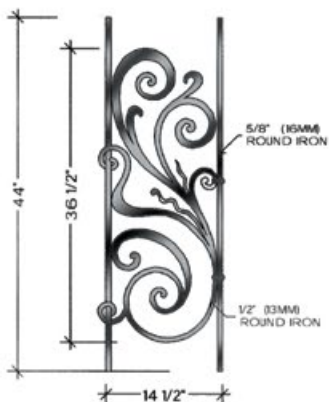
TOP VIEW  
B-2  
ALL RADIUS FROM 30" TO 20'-0"  
**HFRB.B2**



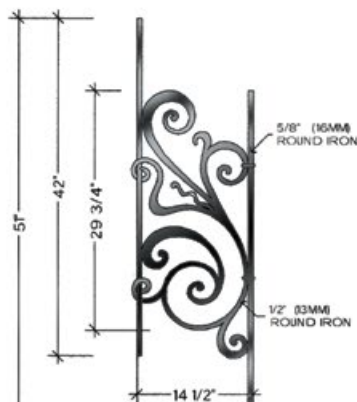
TOP VIEW  
C-2  
ALL RADIUS FROM 30" TO 20'-0"  
**HFRB.C2**



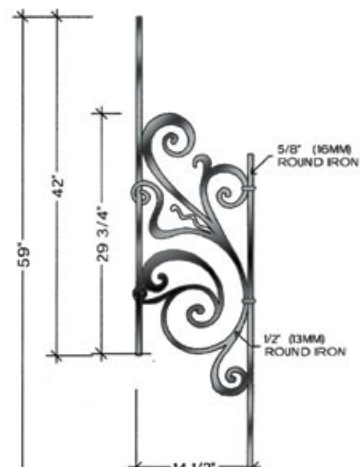
TOP VIEW  
4 1/2" RADIUS  
**HFRB.TERM RT**



TOP VIEW  
A-3  
ALL RADIUS FROM 28" TO 20'-0"  
**HFRB.A3**



TOP VIEW  
B-3  
ALL RADIUS FROM 30" TO 20'-0"  
**HFRB.B3**



TOP VIEW  
C-3  
ALL RADIUS FROM 30" TO 20'-0"  
**HFRB.C3**

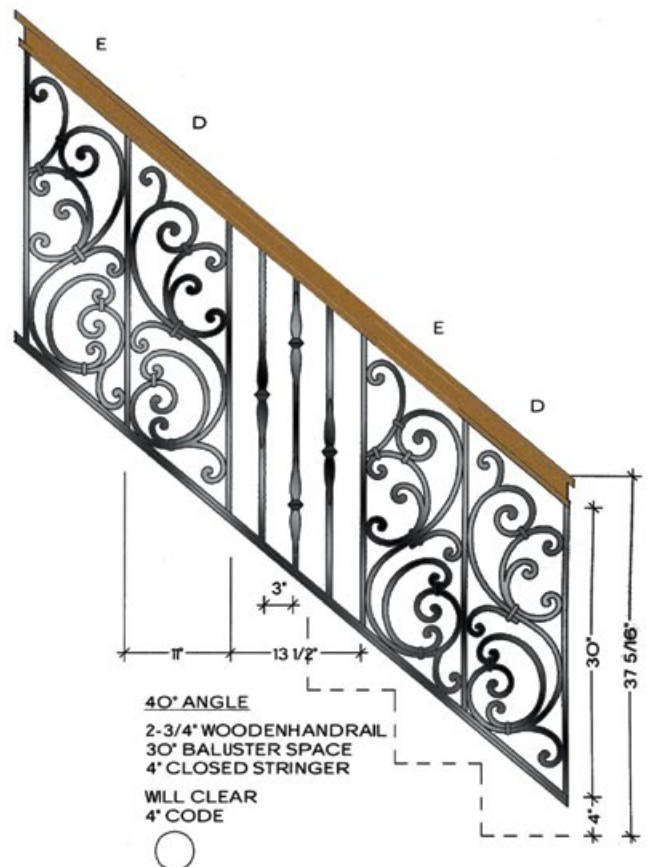
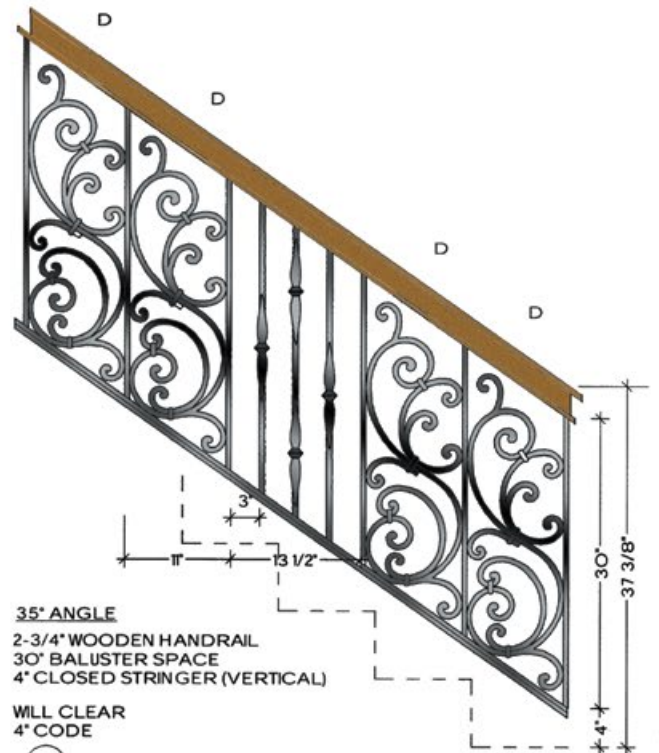


# TUSCANY

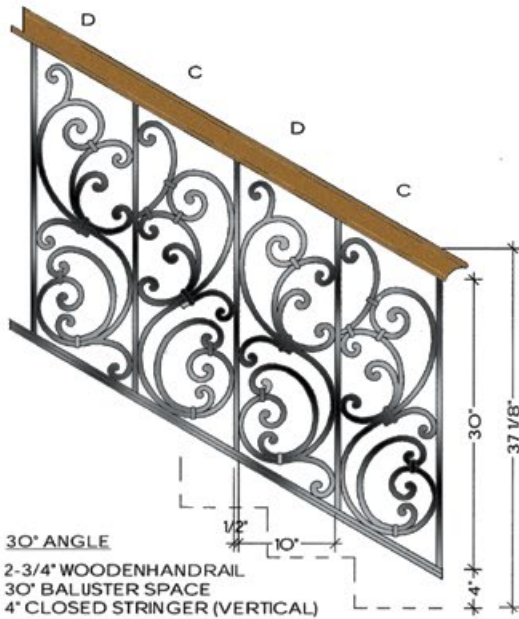


Tuscany HFTU.A1 (shown)

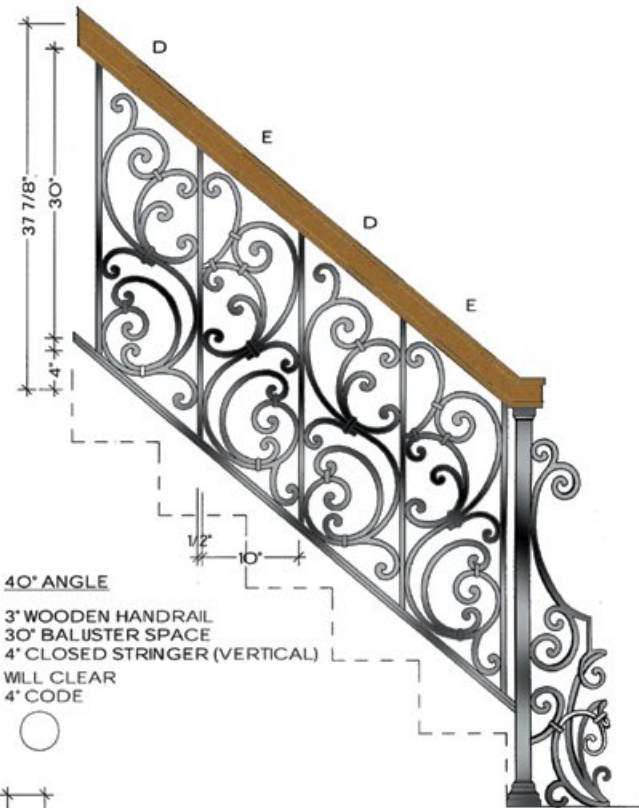
1/2" SQUARE  
IRON



# TUSCANY



WILL CLEAR  
4" CODE

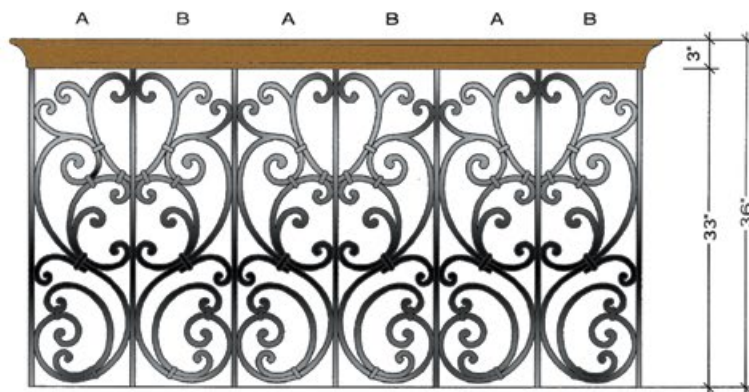


40° ANGLE

3" WOODEN HANDRAIL  
30" BALUSTER SPACE  
4" CLOSED STRINGER (VERTICAL)

WILL CLEAR  
4" CODE

RIGHT TERMINATION  
LEFT SIDE VIEW

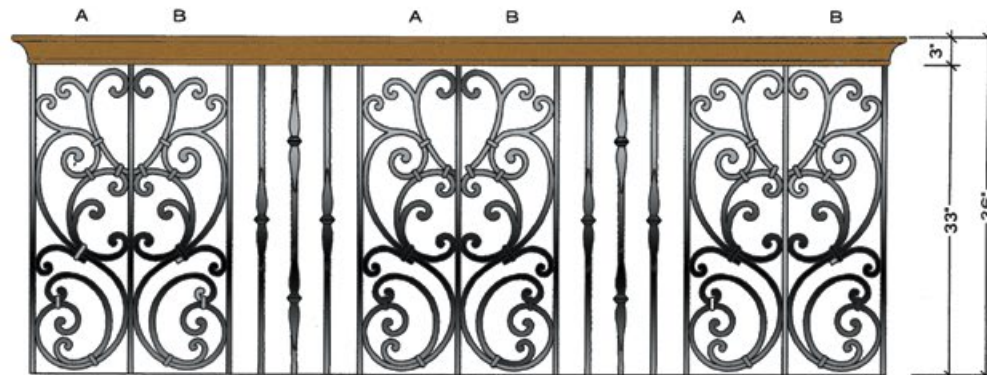


1/2" 10"

BALCONY

3" WOODEN HANDRAIL  
33" BALUSTER SPACE

WILL CLEAR  
4" CODE



1/2" 10"

1/2" 3"

14 1/2"

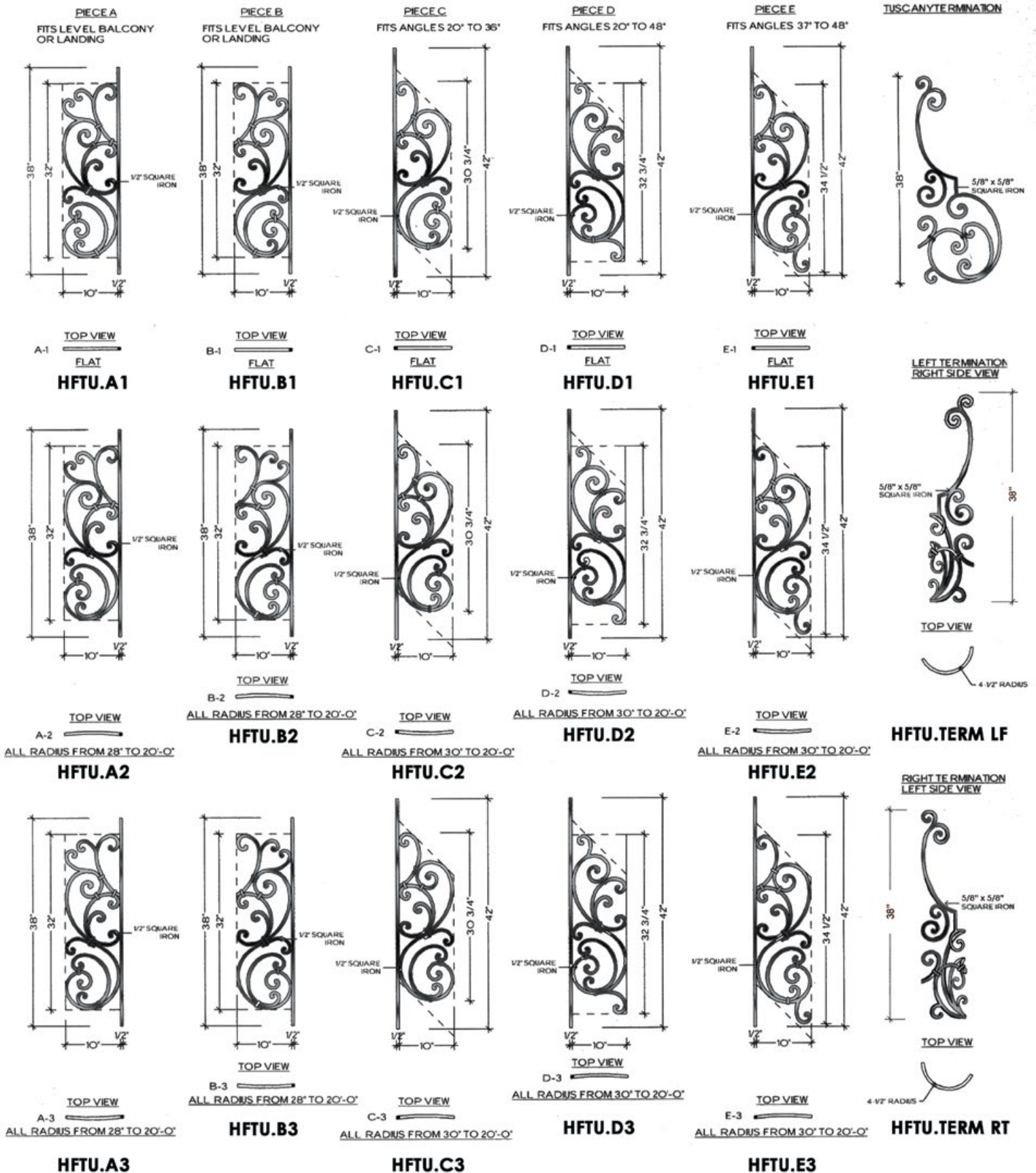
BALCONY

3" WOODEN HANDRAIL  
33" BALUSTER SPACE

WILL CLEAR  
4" CODE



# TUSCANY



All panels are stocked in primed black, powdercoating or faux painting is available by special order

U.S. Pat. No. 5,820,111 & No. 6,059,269





Tuscany panels paired with  
Gothic balusters (shown)



# SEVILLE

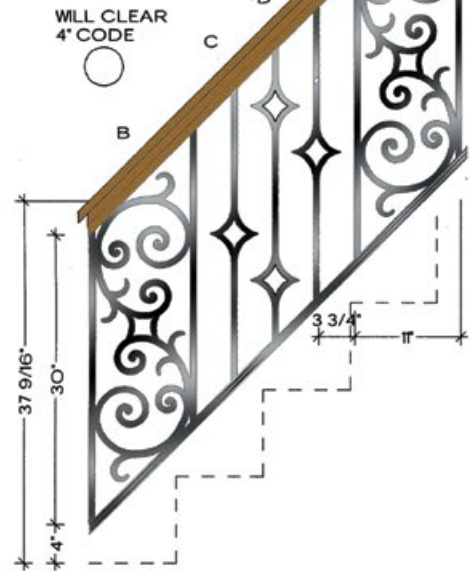


Seville HFSE.A1 (shown)

1/2" SQUARE  
IRON

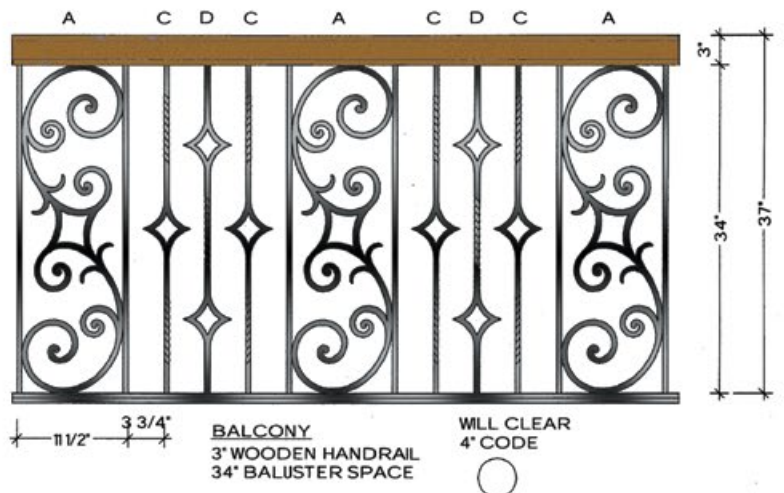
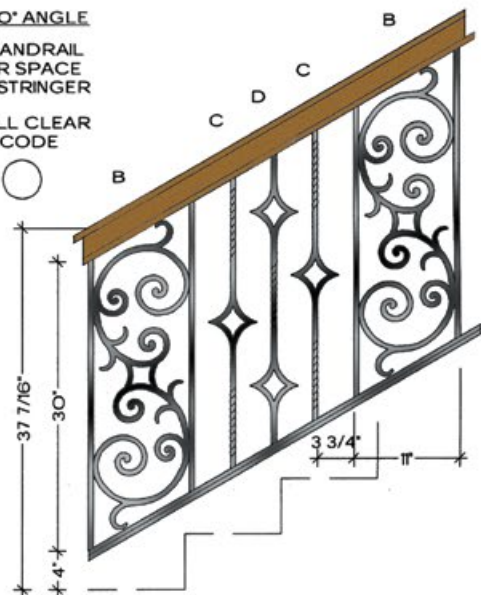


45° ANGLE  
2-1/2" WOODEN HANDRAIL  
30" BALUSTER SPACE  
4" VERTICAL STRINGER

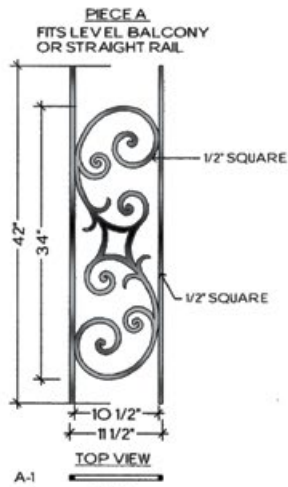


30° ANGLE  
3" WOODEN HANDRAIL  
30" BALUSTER SPACE  
4" VERTICAL STRINGER

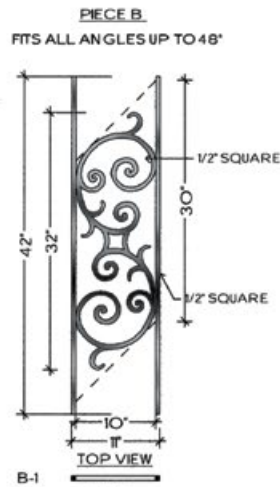
WILL CLEAR  
4" CODE



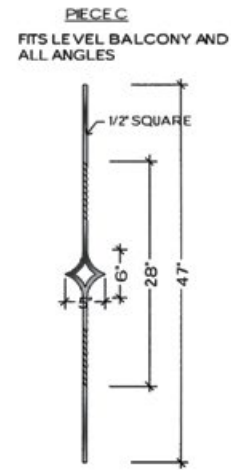
# SEVILLE



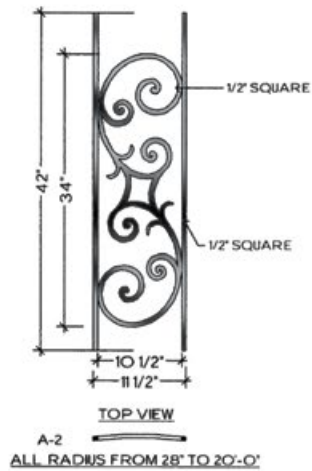
**HFSE.A1**



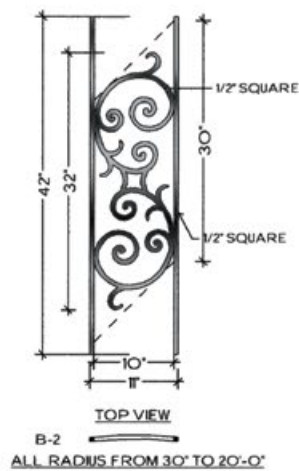
**HFSE.B1**



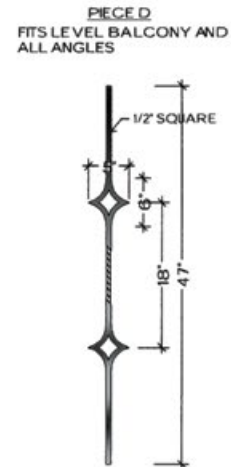
**HFSE.C**



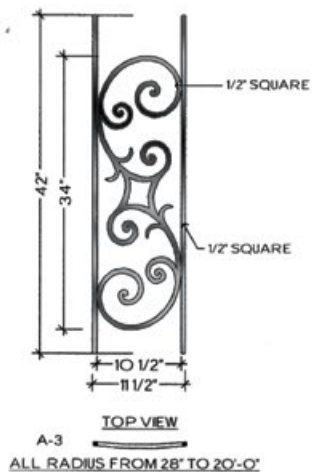
**HFSE.A2**



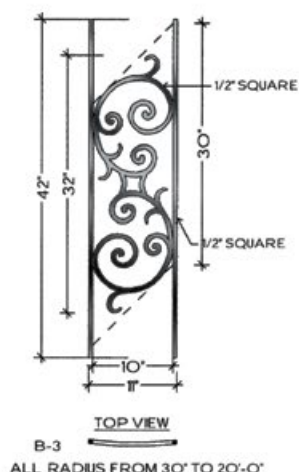
**HFSE.B2**



**HFSE.D**



**HFSE.A3**



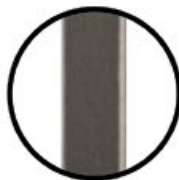
**HFSE.B3**



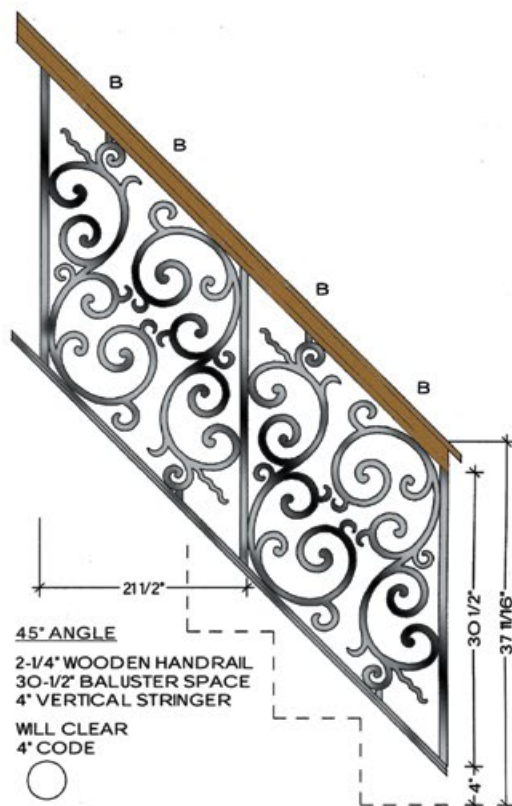
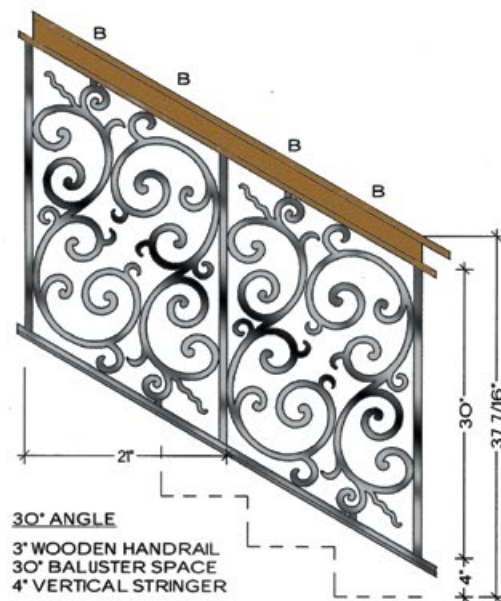
# MILANO



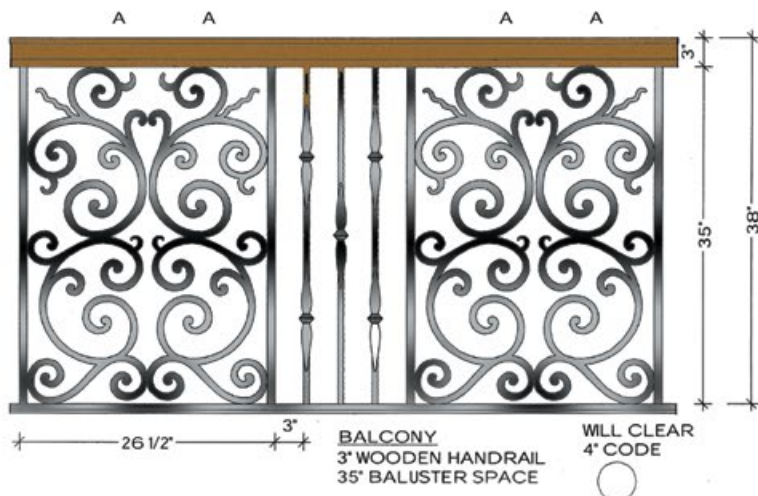
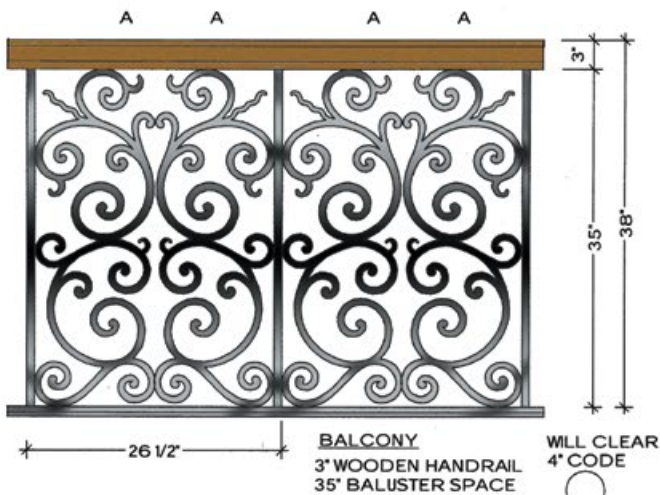
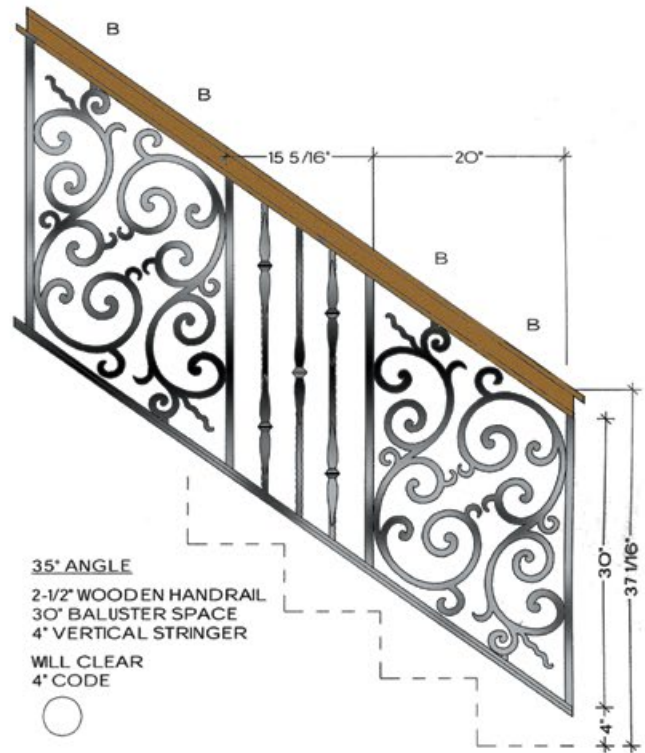
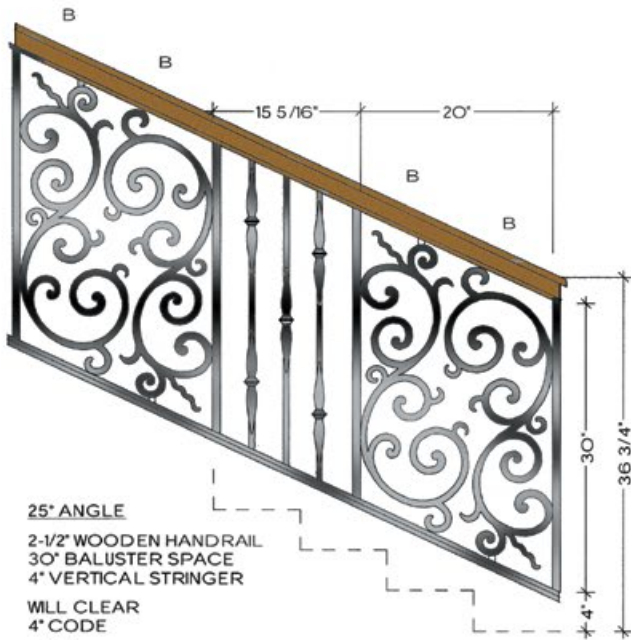
3/4" SQUARE  
TUBE



1/2" SQUARE  
IRON



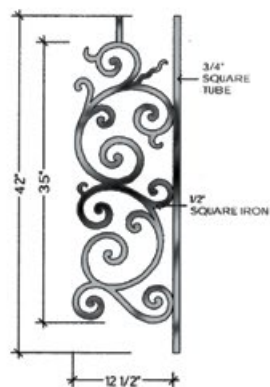
# MILANO





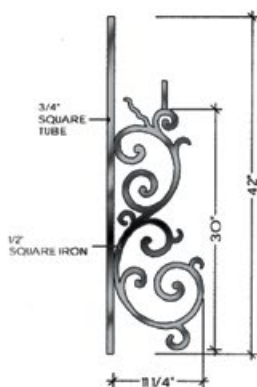
# MILANO

**PIECE A**  
FITS LEVEL BALCONY OR  
LANDING



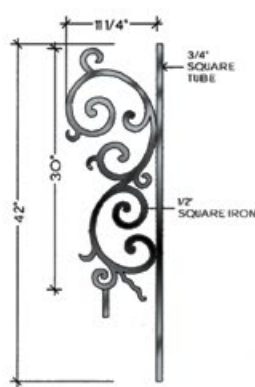
TOP VIEW  
FLAT  
**HFMO.A1**

**PIECE B**  
FITS ALL ANGLES UP TO 48°



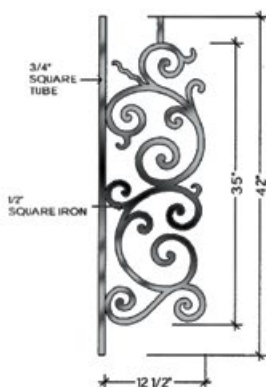
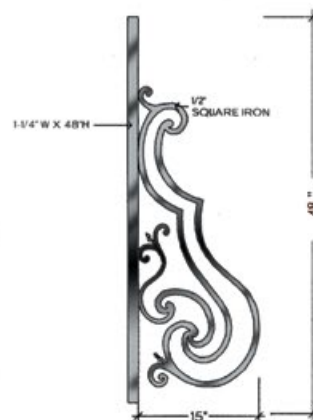
TOP VIEW  
FLAT  
**HFMO.B1**

**PIECE B**  
FITS ALL ANGLES UP TO 48°

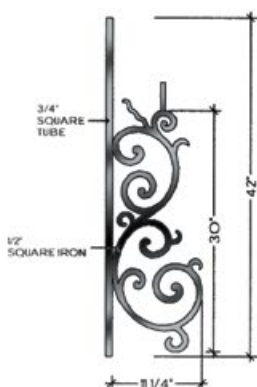


TOP VIEW  
FLAT  
**HFMO.B1**

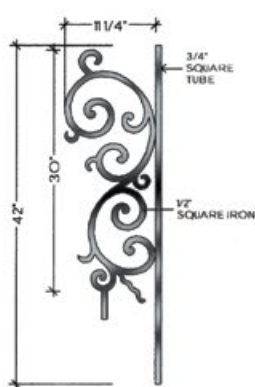
**TERMINATION**



TOP VIEW  
A-2  
ALL RADIUS FROM 28" TO 20'-0"  
**HFMO.A2**



TOP VIEW  
B-2  
ALL RADIUS FROM 30" TO 20'-0"  
**HFMO.B2**



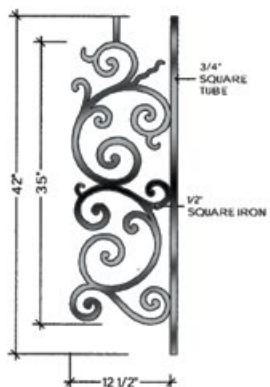
TOP VIEW  
B-2  
ALL RADIUS FROM 30" TO 20'-0"  
**HFMO.B2**

**LEFT TERMINATION  
RIGHT SIDE VIEW**

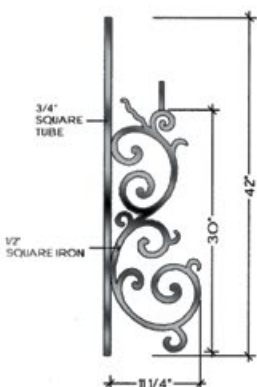


**HFMO.TERM LF**

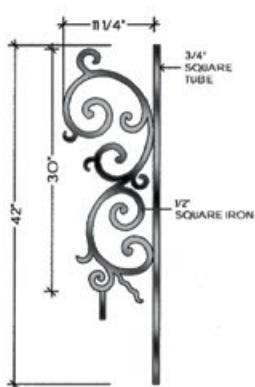
**RIGHT TERMINATION  
LEFT SIDE VIEW**



TOP VIEW  
A-3  
ALL RADIUS FROM 28" TO 20'-0"  
**HFMO.A3**



TOP VIEW  
B-3  
ALL RADIUS FROM 30" TO 20'-0"  
**HFMO.B3**



TOP VIEW  
B-3  
ALL RADIUS FROM 30" TO 20'-0"  
**HFMO.B3**



**HFMO.TERM RT**







# BORDEAUX

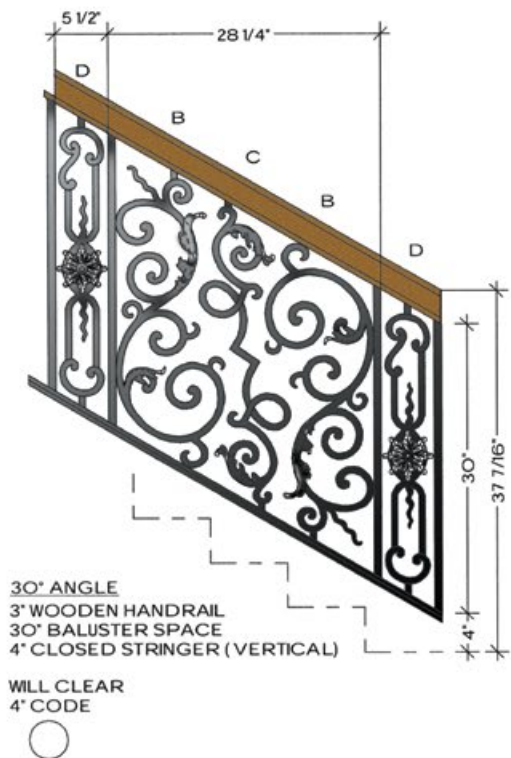
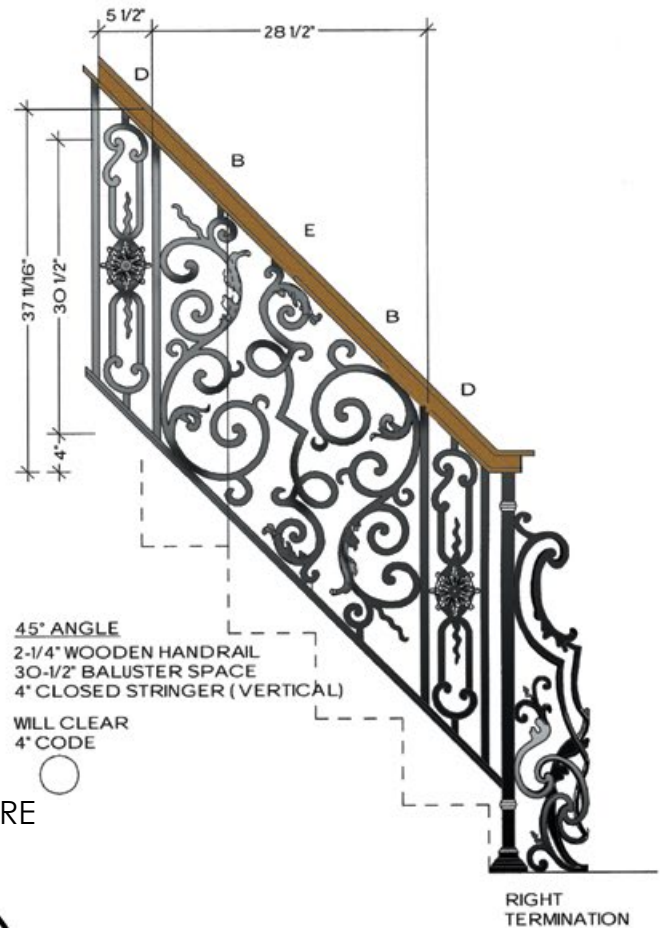


Bordeaux HFBX.A1 (shown)

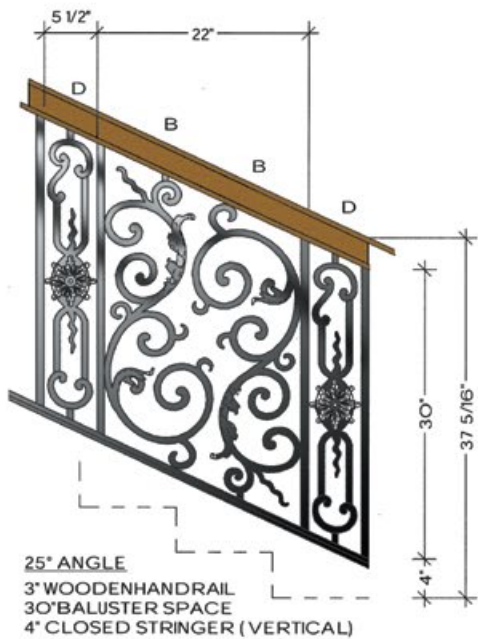
3/4" SQUARE  
TUBE



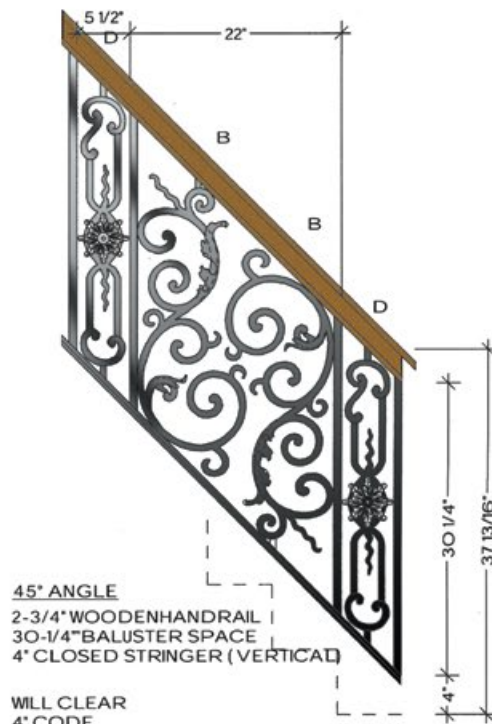
5/8" SQUARE  
IRON



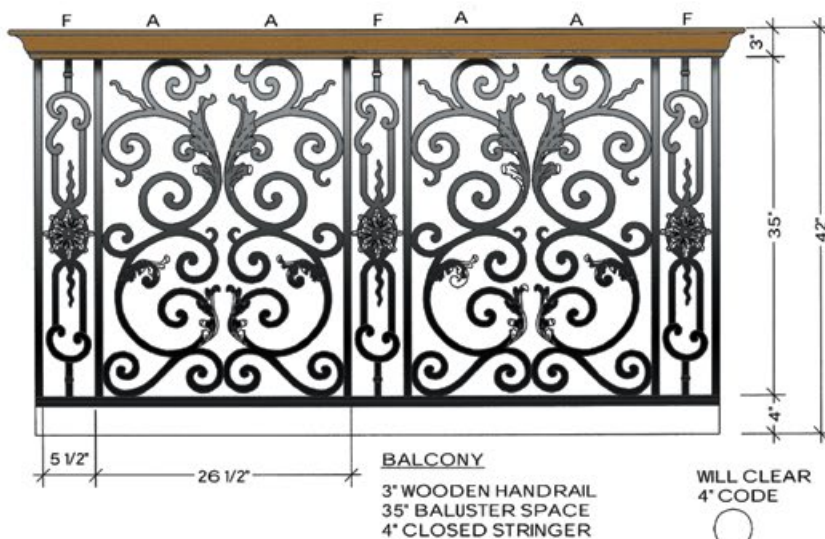
# BORDEAUX



WILL CLEAR  
 4" CODE



WILL CLEAR  
 4" CODE



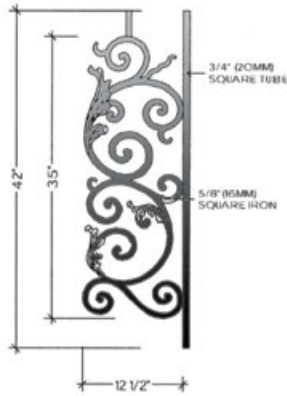
WILL CLEAR  
 4" CODE





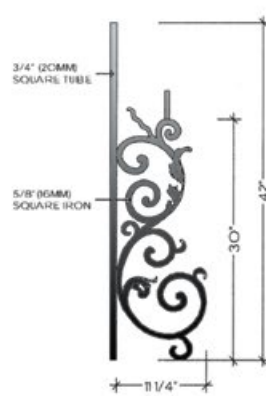
# BORDEAUX

**PIECE A**  
FITS LEVEL BALCONY OR  
STRAIGHT RAILS



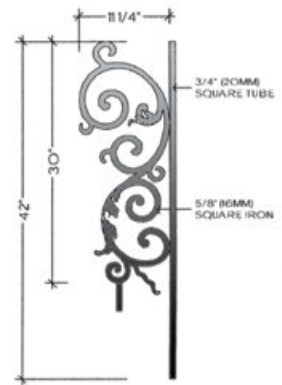
**TOP VIEW**  
A-1 **FLAT**  
**HFBX.A1**

**PIECE B**  
FITS ALL ANGLES UP TO 48°

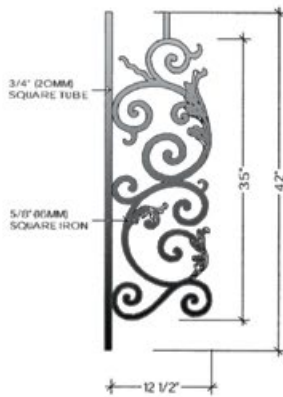


**TOP VIEW**  
B-1 **FLAT**  
**HFBX.B1**

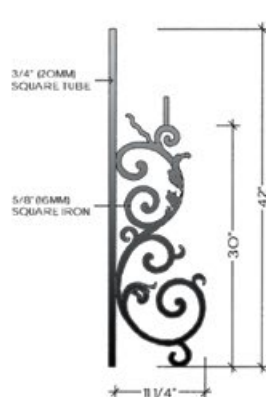
**PIECE B**  
FITS ALL ANGLES UP TO 48°



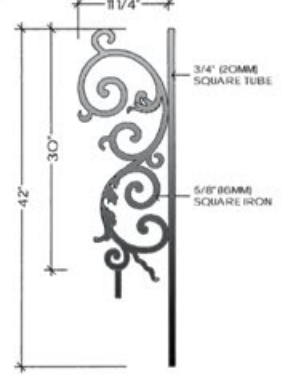
**TOP VIEW**  
B-1 **FLAT**  
**HFBX.B1**



**TOP VIEW**  
A-2  
**HFBX.A2**  
ALL RADIUS FROM 28" TO 20'-0"



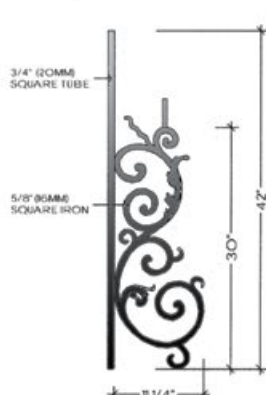
**TOP VIEW**  
B-2  
**HFBX.B2**  
ALL RADIUS FROM 30" TO 20'-0"



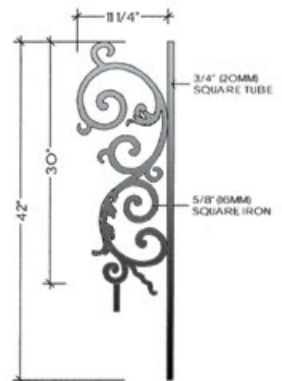
**TOP VIEW**  
B-2  
**HFBX.B2**  
ALL RADIUS FROM 30" TO 20'-0"



**TOP VIEW**  
A-3  
**HFBX.A3**  
ALL RADIUS FROM 28" TO 20'-0"



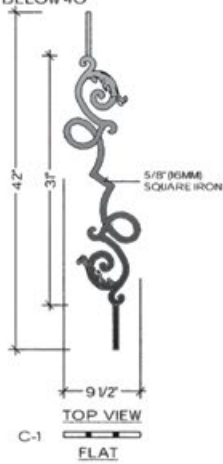
**TOP VIEW**  
B-3  
**HFBX.B3**  
ALL RADIUS FROM 30" TO 20'-0"



**TOP VIEW**  
B-3  
**HFBX.B3**  
ALL RADIUS FROM 30" TO 20'-0"

# BORDEAUX

**PIECE C**  
FITS ONLY INCLINE ANGLES  
BELOW 40°



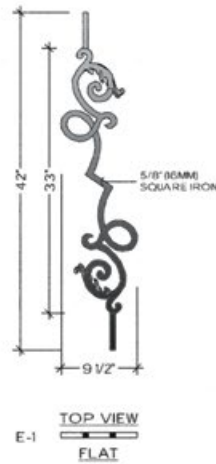
**HFBX.C1**

**PIECE D**  
FITS ALL ANGLES



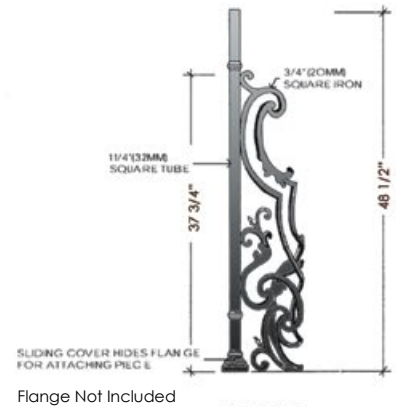
**HFBX.D**

**PIECE E**  
FITS ONLY ANGLES ABOVE 40°



**HFBX.E1**

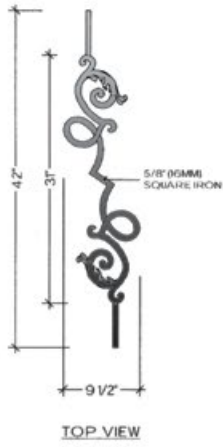
**RIGHT TERMINATION  
INSIDE VIEW**



Flange Not Included



**HFBX.TERM RT**



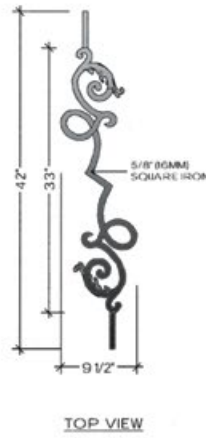
**C-2**  
ALL RADIUS FROM 30° TO 20°-0°

**HFBX.C2**

**PIECE F**  
FITS LEVEL BALCONY  
OR STRAIGHT RAIL



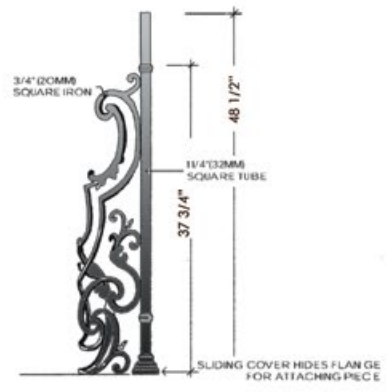
**TOP VIEW**  
**FLAT**  
**HFBX.F**



**E-2**  
ALL RADIUS FROM 30° TO 20°-0°

**HFBX.E2**

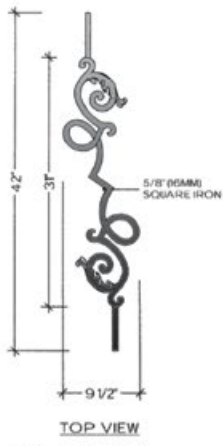
**LEFT TERMINATION  
INSIDE VIEW**



Flange Not Included

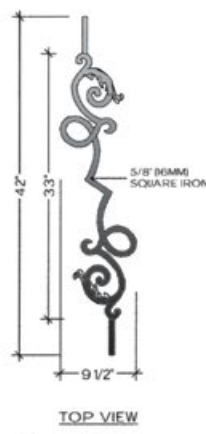


**HFBX.TERM LF**



**C-3**  
ALL RADIUS FROM 30° TO 20°-0°

**HFBX.C3**



**E-3**  
ALL RADIUS FROM 30° TO 20°-0°

**HFBX.E3**



# REGENCY

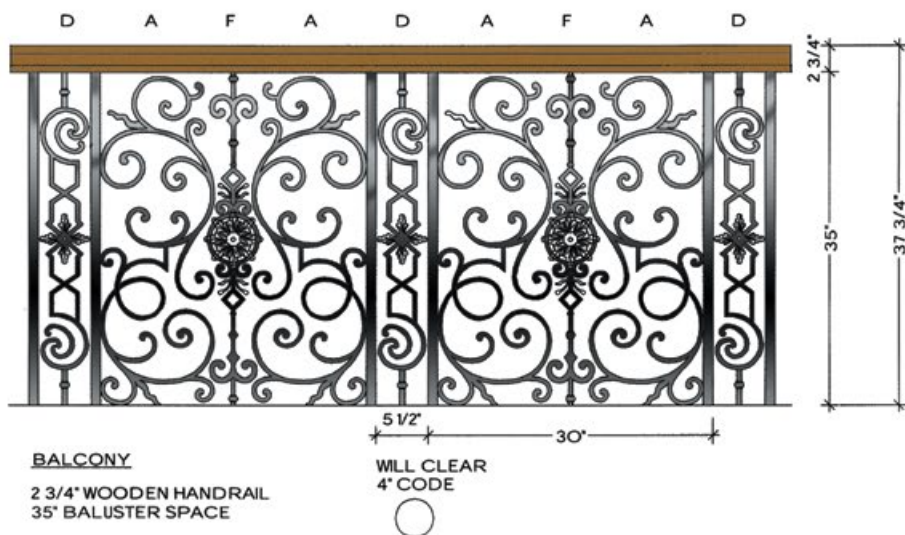
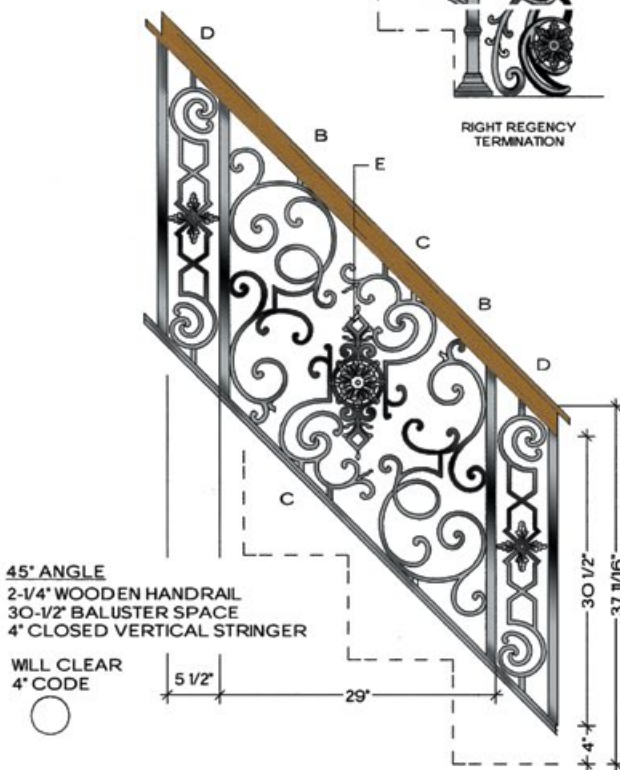
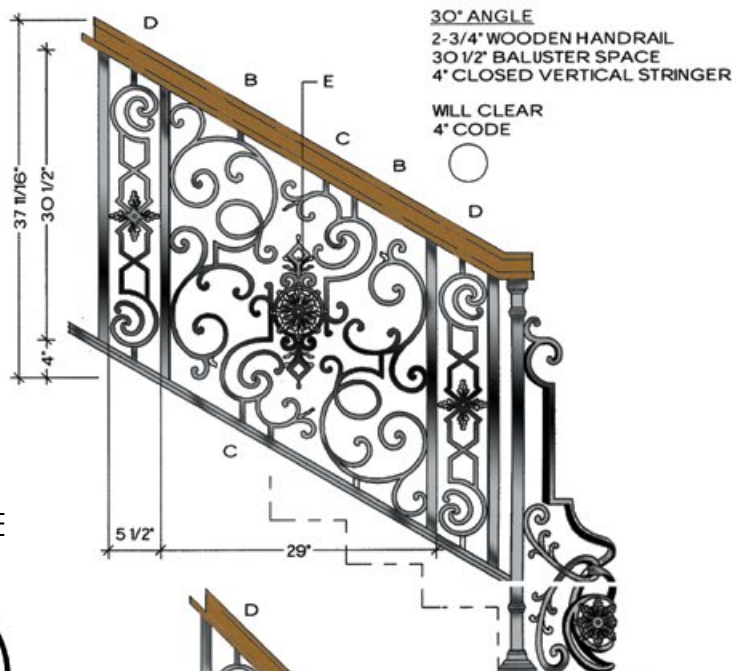


Regency HFREA1 (shown)

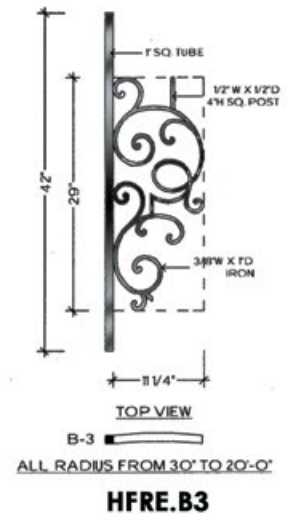
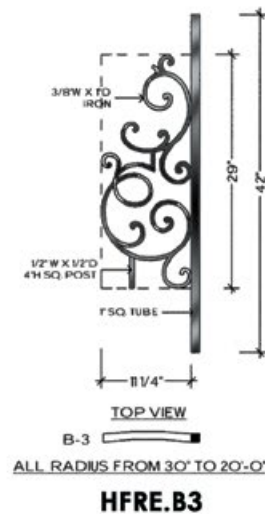
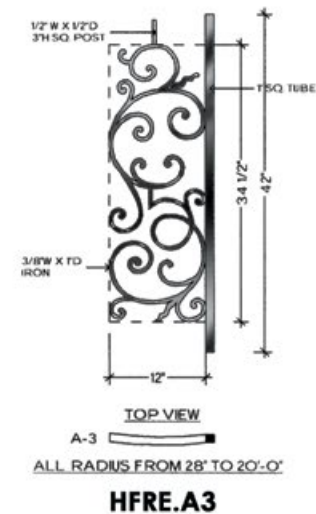
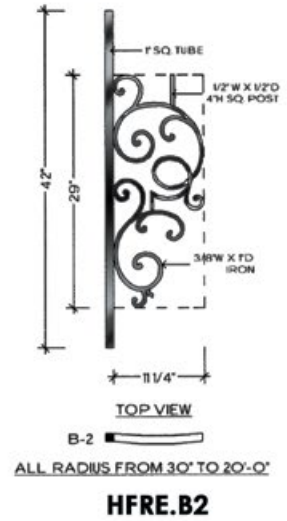
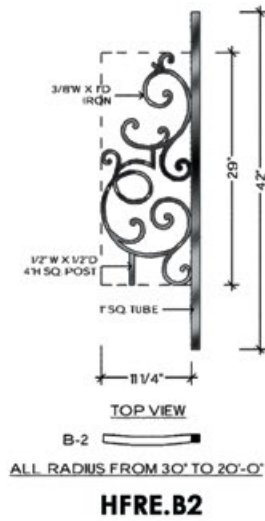
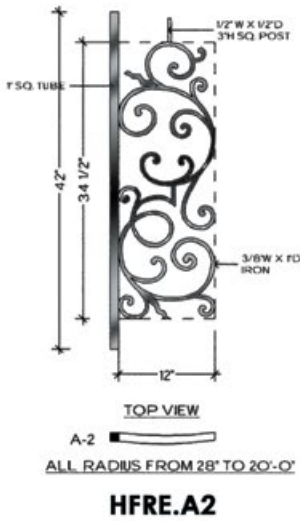
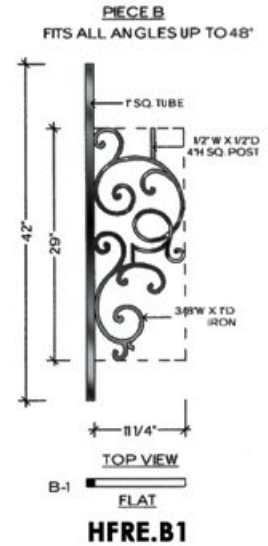
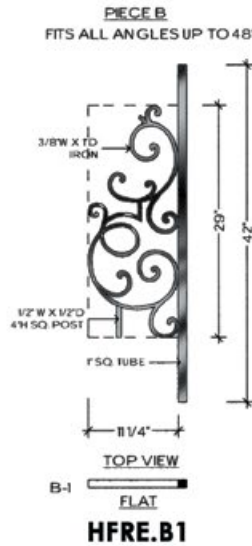
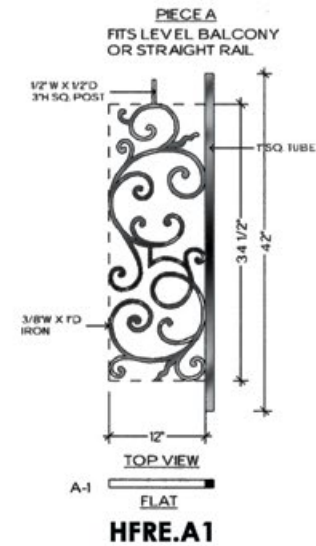
1" SQUARE  
TUBE



3/8" X 1"  
FLAT IRON



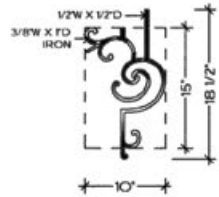
# REGENCY



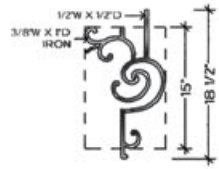


# REGENCY

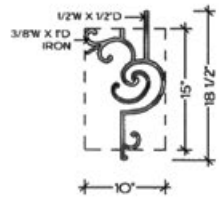
**PIECE C**  
FITS ALL ANGLES UP TO 48°



**TOP VIEW**  
**FLAT**  
**HFRE.C1**



**TOP VIEW**  
**ALL RADIUS FROM 30° TO 20°-0'**  
**HFRE.C2**



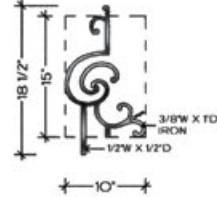
**TOP VIEW**  
**ALL RADIUS FROM 30° TO 20°-0'**  
**HFRE.C3**

**PIECE D**  
FITS ALL ANGLES & LEVEL BALCONY

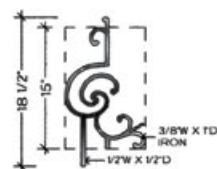


**TOP VIEW**  
**FLAT**  
**HFRE.D**

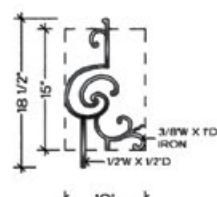
**PIECE C**  
FITS ALL ANGLES UP TO 48°



**TOP VIEW**  
**FLAT**  
**HFRE.C1**

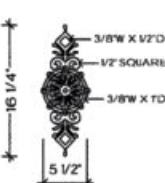


**TOP VIEW**  
**ALL RADIUS FROM 30° TO 20°-0'**  
**HFRE.C2**



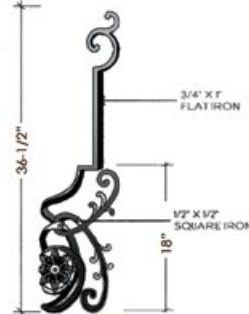
**TOP VIEW**  
**ALL RADIUS FROM 30° TO 20°-0'**  
**HFRE.C3**

**PIECE E**  
FITS ALL ANGLES



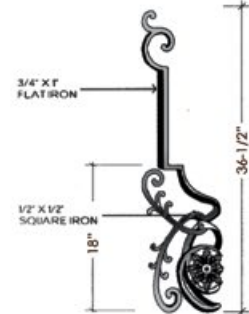
**HFRE.E**

**LEFT SIDE TERMINATION**  
**RIGHT SIDE VIEW**

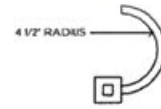


**HFRE.TERM LF**

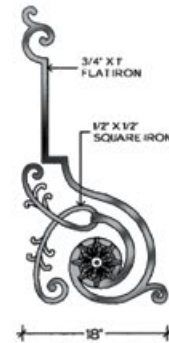
**RIGHT SIDE TERMINATION**  
**LEFT SIDE VIEW**



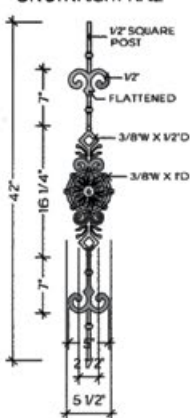
**HFRE.TERM RT**



**TERMINATION**



**PIECE F**  
FITS LEVEL BALCONY OR STRAIGHT RAIL



**TOP VIEW**  
**FLAT**  
**HFRE.F**



U.S. Pat.  
No. 5,820,111  
No. 6,059,269

Regency panels (shown)

Regency<sup>©</sup> 71



## Wood Products

**At House of Forgings  
we provide much  
more than just forged  
iron products, we  
boast an extensive  
line of wood  
components  
as well.**

From handrails to treads, we carry virtually all components necessary to create the staircase or balcony you have envisioned. All products are stocked in Red Oak or Paint Grade, ready for immediate shipping. Components are packaged and shipped with the utmost integrity ensuring that your order will arrive on time and undamaged.

STAIR & RAILING PRODUCTS BY







Elegante-Column newels (RO-4480/RO-4485)  
paired with Twist/Scroll balusters (shown)



## BLANKS



\*4913-41

HT. 41"  
W = 1-1/4"



5067-39

HT. 39"

W = 1-1/4"

5067-41

HT. 41"  
W = 1-1/4"

\* SPECIAL ORDER IN RED OAK

## CLASSIC



## CLASSIC



\* SPECIAL ORDER



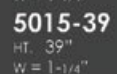
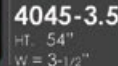
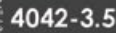
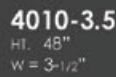
\* SPECIAL ORDER

All newels stocked in Red Oak (RO), all balusters stocked in prefinished white (PG)

# REMINGTON



# MAGNOLIA



# CONCORD





## ELEGANTE-COLUMN



**4480**  
HT. 56"  
W = 5-1/2"



**4485-5**  
HT. 56"  
W = 3-1/4"



**4485**  
HT. 48"  
W = 3-1/4"

## ELEGANTE-TWIST



**4440**  
HT. 56"  
W = 5-1/2"



**4450-5**  
HT. 56"  
W = 3-1/4"



**4450**  
HT. 48"  
W = 3-1/4"

All Elegante newels and balusters stocked in Red Oak (RO)

## BOX NEWELS



Contemporary  
Box Newel  
**4191**  
HT. 56"  
W = 3-1/4"



Contemporary  
Stabilizer Newel  
**4191-SP**  
HT. 43"  
W = 3"



Plain Box  
Newel  
**961-56**  
HT. 56"  
W = 4-1/2"



Recessed Panel  
Box Newel  
**4291**  
HT. 56"  
W = 6"



All box newels come with both  
square and pyramid tops

## BOX NEWELS



Adjustable  
Box Newel  
**4592**  
HT. 56"  
W = 5"  
Plain Box  
Newel  
**4691**  
HT. 56"  
W = 6-1/4"



Plain Newel  
**4592-PLAIN**  
HT. 56"  
W = 3-1/2"



Stabilizer Newel  
**4592-SP**  
HT. 43"  
W = 3"



Raised Panel  
Box Newel  
**4791**  
HT. 56"  
W = 6-1/4"



Fluted Box  
Newel  
**4891**  
HT. 56"  
W = 6-1/4"



Recessed Panel  
Box Newel  
**4991**  
HT. 56"  
W = 6-1/4"

All box newels stocked in Red Oak (RO)



Elegante-Column newels (RO-4480/RO-4485)  
paired with Tuscan balusters, Special wedge  
shaped double end starting step(shown)



# HANDRAIL & FITTINGS

**6040**



**6040**  
Round Wall Rail  
Diameter: 1-5/8"

**6010**



Colonial Hand Rail  
HT. 2-3/8"  
W. 2-1/4"

**6010** Straight Rail  
**6010-B** Bending Rail  
bending rail includes moulding

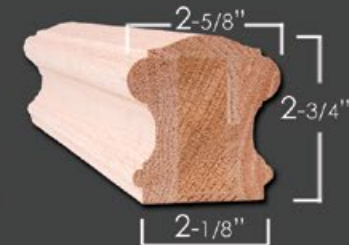
**6210**



Traditional Hand Rail  
HT. 2-3/8"  
W. 2-5/8"

**6210** Straight Rail  
**6210-B** Bending Rail  
bending rail includes moulding

**6710**



Prestige Hand Rail  
HT. 2-3/4"  
W. 2-5/8"

**6710** Straight Rail  
**6713** Bending Rail  
bending rail includes moulding

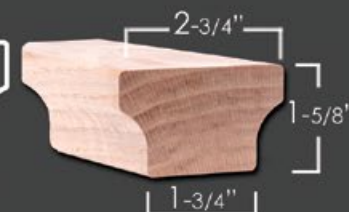
**6002**



Modern Hand Rail  
HT. 1-5/8"  
W. 2-3/4"

**6002** Straight Rail  
Available in 8' & 16'  
no fittings available

**6084**



Modern Hand Rail  
HT. 1-3/4"  
W. 2-5/8"

**6084** Straight Rail  
Available in 8' & 16'  
no fittings available

## RETURNED END



- 7009
- 7209
- 7709

## OPENING CAP



- 7019
- 7219
- 7719

## TANDEM CAP



- 7020
- 7220
- 7720

## OVER EASING



- 7013
- 7213
- 7713

## UP EASING 90 DEGREE



- 7012
- 7212
- 7712
- 7014
- 7214
- 7714

## START EASING WITH CAP



- 7010
- 7210
- 7710

All handrail and fittings stocked in Red Oak (RO)

### LEVEL QUARTER TURN



### LEVEL QUARTER TURN WITH CAP



### LEFT & RIGHT HAND S-TURNS



### LEFT & RIGHT HAND TURNOUTS



### 2 RISE STRAIGHT GOOSENECK



### LEFT & RIGHT HAND VOLUTES



### 2 RISE STRAIGHT GOOSENECK WITH CAP



### 2 RISE LEFT & RIGHT HAND GOOSENECK



### 2 RISE LEFT & RIGHT HAND GOOSENECK WITH CAP



All handrail and fillings stocked in Red Oak (RO)



# TREADS/STEPS/LUMBER/PLY

## TREADS

### RO-8070

Red Oak Bull Nose Tread  
1-1/16" x 11-1/2" x 42, 48, 54,  
60, 72, 84, 96"



## CLASSIC TREADS

### RO-8070-13 x

Red Oak Tread  
1-1/16" x 13" x 48, 60, 72, 96"

### RO-8070-18 x

Red Oak Tread  
1-1/16" x 18" x 48, 60, 72, 84"

### RO-8070-20 x 60

Red Oak Tread  
1-1/16" x 20" x 60"

### RO-8070-20 x 72

Red Oak Tread  
1-1/16" x 20" x 72"

### RO-8070-24 x

Red Oak Tread  
1-1/16" x 24" x 60", 72", 84", 96", 120"

### RO-8070-48 x 48

Red Oak Tread  
1-1/16" x 48" x 48"

### RO-8070-60 x 60

Red Oak Tread  
1-1/16" x 60" x 60"

### RO-8070-48-MR

1-1/16" x 11-1/2" x 48"

### RO-8070-54-MR

1-1/16" x 11-1/2" x 54"

### RO-8070-60-MR

1-1/16" x 11-1/2" x 60"

Mitered Return(MR)(Reversible)

Overall length does not include mitered return



## REMODEL TREAD WITH RISER

### TREAD

Red Oak Bull Nose Tread with Cove  
1-1/16" x 10-1/2" x 42, 54, 60"

### RISER

Red Oak Riser  
5/8" x 7-1/2" x 42, 54, 60"

### RETRO-42 / RETRO-54 / RETRO-60



## REMODEL RETURN TREAD WITH RISER

### TREAD

Red Oak Bull Nose Tread with Cove  
1-1/16" x 10-1/2" x 48, 54, 60"

### RISER

Red Oak Riser  
5/8" x 7-1/2" x 48, 54, 60"

### RETRO-48MR / RETRO-54MR / RETRO-60MR



## BULL NOSED LANDING TREAD

### 8090-6

RED OAK

### 8090-6B

RED OAK BENDING(26 pieces)



## TONGUE & GROOVED BULL NOSED LANDING TREAD

### 8090-6-G

RED OAK(grooved)



## TONGUE & GROOVED LUMBER

### 8095-8-T&G

RED OAK (tongue & grooved)



### 8095-12-T&G

RED OAK (tongue & grooved)



## 1" BULL NOSING

### 8080

RED OAK

### 8080-B

RED OAK BENDING  
(5 pieces)





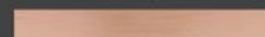
### DOUBLE END STARTING STEP

Diameter: 13-3/4"  
**8015-48** (48" throat) (72" overall)  
**8015-54** (54" throat) (78" overall)  
**8015-60** (60" throat) (84" overall)  
 Red Oak(RO)

Comes with:  
 1" Thick Tread,  
 6-3/4" Tall Riser  
 Cove & Quarter Round Moulding

### STARTER STEP VENEER

Width: 8"  
 Length: 120"  
**RO-VENEER** (Red Oak)



### SINGLE END STARTING STEP

Diameter: 13-3/4"  
**8010-48** (48" throat) (60" overall)  
**8010-60** (60" throat) (72" overall)  
**8010-72** (72" throat) (84" overall)  
 Red Oak(RO)

Comes with:  
 1" Thick Tread,  
 6-3/4" Tall Riser  
 Cove & Quarter Round Moulding



### SPECIAL WEDGE SHAPED DOUBLE END STARTING STEP

Diameter: 12-3/4" (small end)  
 Diameter: 18-1/2" (large end)  
**RO-8915-48** (48" throat) (73-1/2" overall)  
**RO-8915-54** (54" throat) (79-1/2" overall)  
 (Reversible)  
 Red Oak(RO)

Comes with:  
 1" Thick Tread,  
 6-3/4" Tall Riser  
 Cove & Quarter Round Moulding



### FALSE END STARTING STEP

Diameter: 13-3/4" Diameter: 17-1/2"  
 Length: 17-5/8" overall Length: 21-3/4" overall  
**8011** **8012**  
 Red Oak(RO)

Comes with:  
 1" Thick Tread,  
 6-3/4" Tall Riser  
 Cove & Quarter Round Moulding

### PLYWOOD

<b>PLY-1/4-MDF</b>	MDF 1/4" x 4' x 8'	<b>Half Sheet</b> 1/4" x 2' x 8'
<b>PLY-3/4-MDF</b>	MDF 3/4" x 4' x 8'	
<b>PLY-1/8-RO</b>	Red Oak 1/8" x 4' x 8'	<b>Half Sheet</b> 1/4" x 2' x 8'
<b>PLY-1/4-RO</b>	Red Oak 1/4" x 4' x 8'	<b>Half Sheet</b> 1/4" x 2' x 8'
<b>PLY-1/2-RO</b>	Red Oak 1/2" x 4' x 8'	
<b>PLY-3/4-RO</b>	Red Oak 3/4" x 4' x 8'	
<b>PLY-1/8-Birch</b>	Birch 1/8" x 4' x 8'	
<b>PLY-1/4-Birch</b>	Birch 1/4" x 4' x 8'	<b>Half Sheet</b> 1/4" x 2' x 8'
<b>PLY-1/2-Birch</b>	Birch 1/2" x 4' x 8'	
<b>PLY-3/4-Birch</b>	Birch 3/4" x 4' x 8'	
<b>PLY-3/8-Bending</b>	Red Oak 3/8" x 4' x 8' (bending board)	

### LUMBER

<b>RO-06</b>	Red Oak 3/4" x 5-1/2" S4S Lumber
<b>RO-08</b>	Red Oak 3/4" x 7-1/4" S4S Lumber
<b>RO-08-B</b>	Red Oak 3/4" x 7-1/4" Bending(29 pieces)
<b>RO-12</b>	Red Oak 3/4" x 11-1/4" S4S Lumber
<b>MDF-06</b>	MDF 11/16" x 5-1/4"
<b>MDF-08</b>	MDF 11/16" x 7-1/4"
<b>MDF-12</b>	MDF 11/16" x 11-1/4"



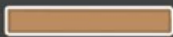
# WOOD MOULDING & FLEXIBLE TRIM



<b>RO-C8</b>	Red Oak 2-1/2" x 11/16" Colonial Casing
<b>PG-C8</b>	Paint Grade 2-1/2" x 11/16" Colonial Casing
<b>FLEX-C8</b>	Paint Grade 2-1/2" x 11/16" Colonial Casing



<b>PG-CAP MOULD</b>	Paint Grade 1-1/8" x 3/8" Cap Mould
---------------------	-------------------------------------



<b>RO-6007</b>	Red Oak 1-3/4" Filet
<b>PG-6007</b>	Paint Grade 1-3/4" Filet



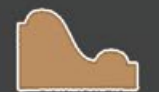
<b>RO-6050</b>	Red Oak 1-1/4" Filet
<b>PG-6050</b>	Paint Grade 1-1/4" Filet



<b>RO-PM-1</b>	Red Oak 11/16" x 1/-1/4" RAB. Panel Mould
<b>PG-PM-1</b>	Paint Grade 11/16" x 1/-1/4" RAB. Panel Mould
<b>Flex-PM-1</b>	Flexible Smooth 11/16" x 1/-1/4" RAB. Panel Mould
<b>Flex-PM-1-WG</b>	Flexible Wood Grain 11/16" x 1/-1/4" RAB. Panel Mould (1/4" Offset)



<b>RO-PM-2</b>	Red Oak 11/16" x 1/-1/4" RAB. Panel Mould
<b>PG-PM-2</b>	Paint Grade 11/16" x 1/-1/4" RAB. Panel Mould
<b>Flex-PM-2</b>	Flexible Smooth 11/16" x 1/-1/4" RAB. Panel Mould
<b>Flex-PM-2-WG</b>	Flexible Wood Grain 11/16" x 1/-1/4" RAB. Panel Mould (3/4" Offset)



<b>RO-PM-5</b>	Red Oak 11/16" x 1-1/8" Flat Panel Mould
<b>PG-PM-5</b>	Paint Grade 11/16" x 1-1/8" Flat Panel Mould
<b>Flex-PM-5</b>	Flexible Smooth 11/16" x 1-1/8" Flat Panel Mould
<b>Flex-PM-5-WG</b>	Flexible Wood Grain 11/16" x 1-1/8" Flat Panel Mould



<b>RO-8050</b>	Red Oak 7/16" x 3/4" Base Shoe Mould
<b>Flex-MS-127</b>	Flexible Smooth 7/16" x 3/4" Base Shoe Mould
<b>Flex-MS-127-WG</b>	Flexible Wood Grain 7/16" x 3/4" Base Shoe Mould



<b>RO-8060</b>	Red Oak 3/4" x 3/4" Cove Mould
<b>PG-8060</b>	Paint Grade 3/4" x 3/4" Cove Mould
<b>Flex-MS-92</b>	Flexible Smooth 3/4" x 3/4" Cove Mould
<b>Flex-MS-92-WG</b>	Flexible Wood Grain 3/4" x 3/4" Cove Mould



<b>RO-8065</b>	Red Oak 1/2" x 1/2" Cove Mould
<b>PG-8065</b>	Paint Grade 1/2" x 1/2" Cove Mould
<b>Flex-MS-101</b>	Flexible Smooth 1/2" x 1/2" Cove Mould
<b>Flex-MS-101-WG</b>	Flexible Wood Grain 1/2" x 1/2" Cove Mould



<b>Flex-LS-105</b>	Flexible Smooth 3/4" x 3/4" Quarter Round Mould
<b>Flex-LS-105-WG</b>	Flexible Wood Grain 3/4" x 3/4" Quarter Round Mould

# ACCESSORIES

## WALL RAIL BRACKET

1-1/4" x 2-3/8" Mounting Plate  
3" Extension From Wall



HFBC.3002 (BRUSHED CHROME)  
HFCV.3002 (COPPER VEIN)  
HFORB.3002 (OIL RUBBED BRONZE)  
HFORC.3002 (OIL RUBBED COPPER)  
HFPB.3002 (POLISHED BRASS)  
HFSC.3002 (SATIN CLEAR)  
HFSP.3002 (SILVER VEIN)  
HFSTB.3002 (SATIN BLACK)

## HANDRAIL BRACKET

2-1/16" Rd. Mounting Plate  
3" Extension From Wall



HFBC.3003 (BRUSHED CHROME)  
HFAN.3003 (ANTIQUE NICKEL)  
HFCE.3003 (CHROME)  
HFNL.3003 (NICKEL)  
HFCV.3003 (COPPER VEIN)  
HFORB.3003 (OIL RUBBED BRONZE)  
HFORC.3003 (OIL RUBBED COPPER)  
HFSC.3003 (SATIN CLEAR)  
HFSP.3003 (SILVER VEIN)  
HFSTB.3003 (SATIN BLACK)  
HFVB.3003 (VINTAGE BRASS)

## WOOD GLUE & FILLER



FAM-O-WOOD  
RO-9208 (Red Oak)

## EPOXY GUN-EPC-112



## EPOXY-EPC-410



## EPOXY PASTE EPC-7



## OAK ROSETTES

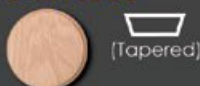


RO-7033  
4"x 5-1/2"  
(Red Oak)

RO-7037  
4"x 5-1/2"  
(Red Oak)

RO-7039  
4"x 4"  
(Red Oak)

## OAK PLUGS



RO-9001 (3/8")  
RO-9002 (1/2")  
RO-9003 (5/8")  
RO-9004 (3/4")  
RO-9005 (1")  
RO-9006 (1-1/4")  
RO-9007 (1-1/2")

## NEWEL FASTENER S-9403



Sure Title

## NEWEL FASTENER S-9401



Key Lock

## NEWEL CAP

### SQUARE CAP-4000

3-1/4" Square  
3/4" x 1" dowel



## RAIL BOLT KIT

### S-9600

(Includes hex nut, spacer  
and 1" Red Oak plug)



## RAIL BOLT DRIVER

### S-9600-D

(fits machine thread)



sold individually

## DOWEL SCREW

### C-905-2 (25 per bag)



## DRIVER

### C-905-2D

(fits wood screw thread)



sold individually





Maple



Poplar



White Oak



Red Oak (RO)



Prefinished White (PG)



Hickory/Pecan



Clear Alder



American Cherry



Walnut



Sapele  
Mahogany



Brazilian Cherry

## Wood Products

All wood products are stocked in Red Oak(RO) or Prefinished White(PG) unless otherwise noted.

## Domestic and Exotic Wood Species

All wood products in non-stock species are available by special order.



## Custom Fabrication & Powdercoating

We specialize in modifying our standard iron components to suit the needs of your specific project. Whether your project involves balusters to be extended, panels modified to ensure code compliance or matching one of our powdercoated finishes or patinas we can help.



## Marketing Literature

We offer a wide array of marketing literature designed to support product sales: product catalogs, brochures, flyers, postcards and customized literature are available through our authorized dealer program.



## Sales Displays & Product Samples

Our wide variety of sales displays will provide you with the tools to sell products. We have sizes to fit your floor space. Custom displays are also available.



## Software & Design

Stair Artist stair design tool makes it easy to plan your staircase project. Our extensive library of CAD images and product photos will aid and inspire you in designing your staircase.

AUTHORIZED DEALER



Acworth, GA (678) 574-5851  
Nashville, TN (615) 465-6467

[www.imagedesignstairs.com](http://www.imagedesignstairs.com)

